

**NOTES :**

1. REFER TO SD-1100 AND SD-1101 FOR P & ID SYMBOLS.
2. REFER TO SD-5500 TO SD-5503 INCLUSIVE FOR DN25 AND/OR DN50 RPZD STATION DETAILS.
3. THIS "TYPICAL" P & ID BASED ON A DUTY/STANDBY PUMP STATION FOR A DESIGN FLOW OF 15 l/s APPROX.
4. EXAMPLE DATA PROVIDED. DESIGNER SHALL MODIFY DETAILS TO MATCH SPECIFIC PROJECT.

A INITIAL ISSUE					15/06/2018	C. Dickson	K. Danenbergsons	D. Eager
B NOTES AND TEXT UPDATE					17/09/2018	S. Essey	K. Danenbergsons	C. Patrick
No.	ISSUE	DATE	DRAWN	CHECKED	AUTHORISED			

DAM	RES	SPS	X
BWS	WAT	STP	
WTP	SEW		
WPS	REC		
ASSET AREA APPLICABILITY			



**STANDARD DRAWING  
SEWAGE PUMP STATIONS  
TYPICAL PIPING AND INSTRUMENTATION DIAGRAM**

DRAWING STATUS		Current
SD-1200-C		ISSUE
A1	© Icon Water, 2017	B

**DEHUMIDIFIER**

**DHM-01**

FLOW: xx m<sup>3</sup>/h (100% Flow)  
 PRESSURE: xx Pa (Nominal)

**ACTIVATED CARBON TANK**

**TNK-01**

VELOCITY: xx m/s  
 CONTACT TIME: xx sec  
 BED DEPTH: xx m  
 VOLUME: xx m<sup>3</sup>  
 MASS OF CARBON: xx kg  
 PRESSURE DROP: xx Pa  
 PRESSURE: xx Pa (Nominal)

**ODOUR CONTROL FAN**

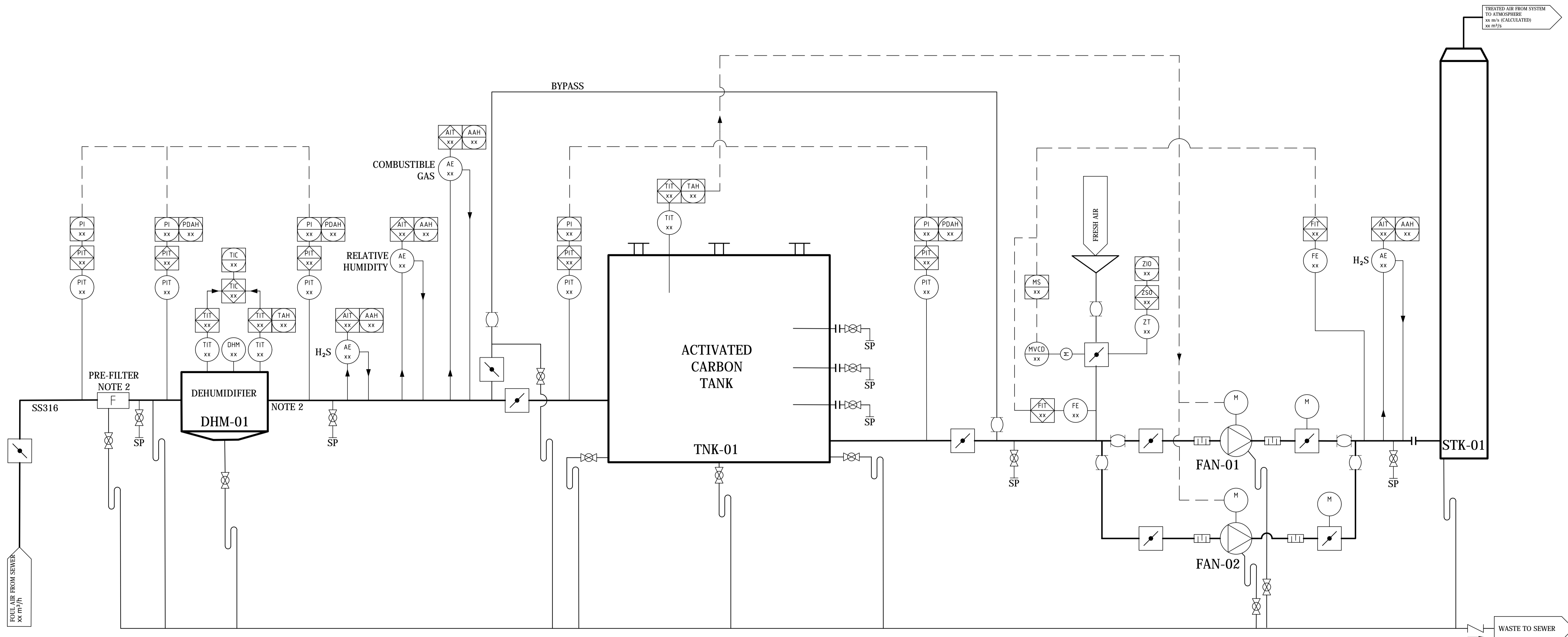
**FAN-01 / FAN 2**  
**DUTY / STANDBY**

FLOW: xx m<sup>3</sup>/h (100% Flow)  
 PRESSURE: xx kPa

**DISCHARGE STACK**

**STK-01**

TREATED FLOW: xx m<sup>3</sup>/h (100% Flow)  
 HEIGHT: xx m  
 EXIT VELOCITY: xx m/s  
 DIAMETER STACK: xx mm  
 DIAMETER EXIT CONE: xx mm



**NOTES:**

1. XX DENOTES FIELDS THAT ARE TO BE POPULATED WITH SITE / PROJECT SPECIFIC VALUES.
2. PRE-FILTER AND DEHUMIDIFIER BYPASSES NOT SHOWN FOR CLARITY.

No.	ISSUE	DATE	DRAWN	CHECKED	AUTHORISED
A	INITIAL ISSUE	18/07/2018	S. Essery	S. Buck	K. Danenbergsons
B	DRAWING UPDATED	18/06/2019	S. Essery	K. Danenbergsons	C. Patrick

ASSET AREA APPLICABILITY				
DAM	RES	SPS	X	
BWS	WAT	STP		
WTP	SEW	REC	X	
WPS	REC			



STANDARD DRAWING  
 ODOUR CONTROL UNIT  
 TYPICAL PROCESS AND INSTRUMENTATION DIAGRAM

DRAWING STATUS	
Current	
SD-1203-C	
A1	ISSUE B
© Icon Water, 2017	