

1 Approved Products List for Sub-metering Arrangement

1.1 Water Sub-meter Box Kit for Inground Installation – Potable Water Network

Item	Supplier	Product	Appraisals
1	All Valve	Brand: All Valve Industries Sizes: DN20 Material: HDPE / Brass / Copper Connections: BSP x flat face meter union Rating: PN16 Models: AVMB-2BSPN/BP	No WSAA appraisal
All Valve sub-meter inground box kit comprises of three main components			
1.1	All Valve	Product: Ball Valve Brand: Airaga Sizes: DN20 Material: Brass Connections: BSP x flat face meter union Rating: PN16 Models: 019400507R1	WSAA PA 1927
1.2	All Valve	Product: Meter Box Brand: Draper Sizes: DN20 (445L * 288W * 320D) Material: High Density Polyethylene Connections: N/A Rating: Class A Models: DRA20-1-78-SBK	No WSAA appraisal
1.3	All Valve	Product: Meter Spacer Brand: Thomas Gooden Foundry Sizes: DN20 Material: Copper Connections: Ball joint meter thread Rating: PN16 Models: BP20S-H6	No WSAA appraisal
Item	Supplier	Product	Appraisals
2	Strongcast	Brand: Strongcast Sizes: DN20 Material: HDPE / Brass / Copper Connections: BSP x flat face meter union Rating: PN16 Models: IWSCMB-2BSP	No WSAA appraisal
Strongcast sub-meter inground box kit comprises of three main components			
2.1	Strongcast	Product: Ball Valve Brand: Strongcast Sizes: DN20 Material: Brass Connections: BSP x flat face meter union Rating: PN16 Models: B2520	WSAA PA 2024
2.2	Strongcast	Product: Meter Box Brand: Strongcast Sizes: DN20 (427L * 267W * 316D) Material: High Density Polyethylene Connections: N/A Rating: Class A Models: SCMBL	No WSAA appraisal
2.3	Strongcast	Product: Meter Spacer Brand: Strongcast Sizes: DN20 Material: Composite Connections: Ball joint meter thread Rating: PN16 Models: SCPSNSW/S	No WSAA appraisal

1.2 Water Sub-meter Wall Bracket Kit for Cabinet Installation – Potable Water Network

Item	Supplier	Product	Appraisals
1	All Valve	Brand: All Valve Industries Sizes: DN20 Material: Brass / Stainless Steel / Copper Connections: BSP x flat face meter union Rating: PN16 Models: SMLIMSS-BP	WSAA PA 1927
All Valve sub-meter wall bracket kit comprises of three main components			
1.1	All Valve	Product: Ball Valve Brand: Airaga Sizes: DN20 Material: Brass Connections: BSP x flat face meter union Rating: PN16 Models: 019400507R1	WSAA PA 1927
1.2	All Valve	Product: Bracket Brand: Airaga Sizes: Suit DN20 isolation valves Material: Stainless Steel Connections: N/A Rating: N/A Models: DI01SS/194	No WSAA appraisal
1.3	All Valve	Product: Meter Spacer Brand: Thomas Gooden Foundry Sizes: DN20 Material: Copper Connections: Ball joint meter thread Rating: PN16 Models: BP20S-H6	No WSAA appraisal
Item	Supplier	Product	Appraisals
2	Strongcast	Brand: Strongcast Sizes: DN20 Material: Brass / Stainless Steel / Copper / Composite Connections: BSP x flat face meter union Rating: PN16 Models: SCMLIM20N	No WSAA appraisal
Strongcast sub-meter wall bracket kit comprises of three main components			
2.1	Strongcast	Product: Ball Valve Brand: Strongcast Sizes: DN20 Material: Brass Connections: BSP x flat face meter union Rating: PN16 Models: B2520	WSAA PA 2024
2.2	Strongcast	Product: Bracket Brand: Strongcast Sizes: Suit DN20 isolation valves Material: Stainless Steel / Composite Connections: N/A Rating: N/A Models: SCMLIM20	No WSAA appraisal
2.3	Strongcast	Product: Meter Spacer Brand: Strongcast Sizes: DN20 Material: Copper Connections: Ball joint meter thread Rating: PN16 Models: SCPSNSW/S	No WSAA appraisal

Limits of Use:

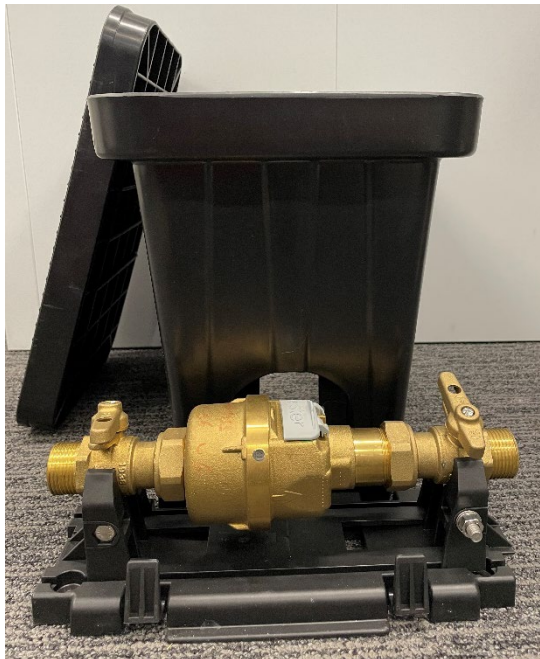
1. The use of plastic threaded components is not allowed within the water network. All threaded components must have a metal-to-metal fit-up.
2. The installation must ensure that ball valve unions are not overtightened. The appropriate tightening is defined as hand tight plus a quarter to a half turn with a spanner. Overtightening can lead to damage of the rubber washer and may result in a noticeable reduction in water service's flow rate. Conversely, not tightening sufficiently can result in leakage. Note that Icon Water is not responsible for any leakage issues downstream of the master meter.

General Notes:

1. Refer to STD-SPE-M-006 Requirements for Property Service Connections and Water Meters for additional information on Icon Water sub-metering requirements.



All Valve DN20 sub-meter box kit for inground installation (water meter not included)



Strongcast DN20 sub-meter box kit for inground installation (water meter not included)