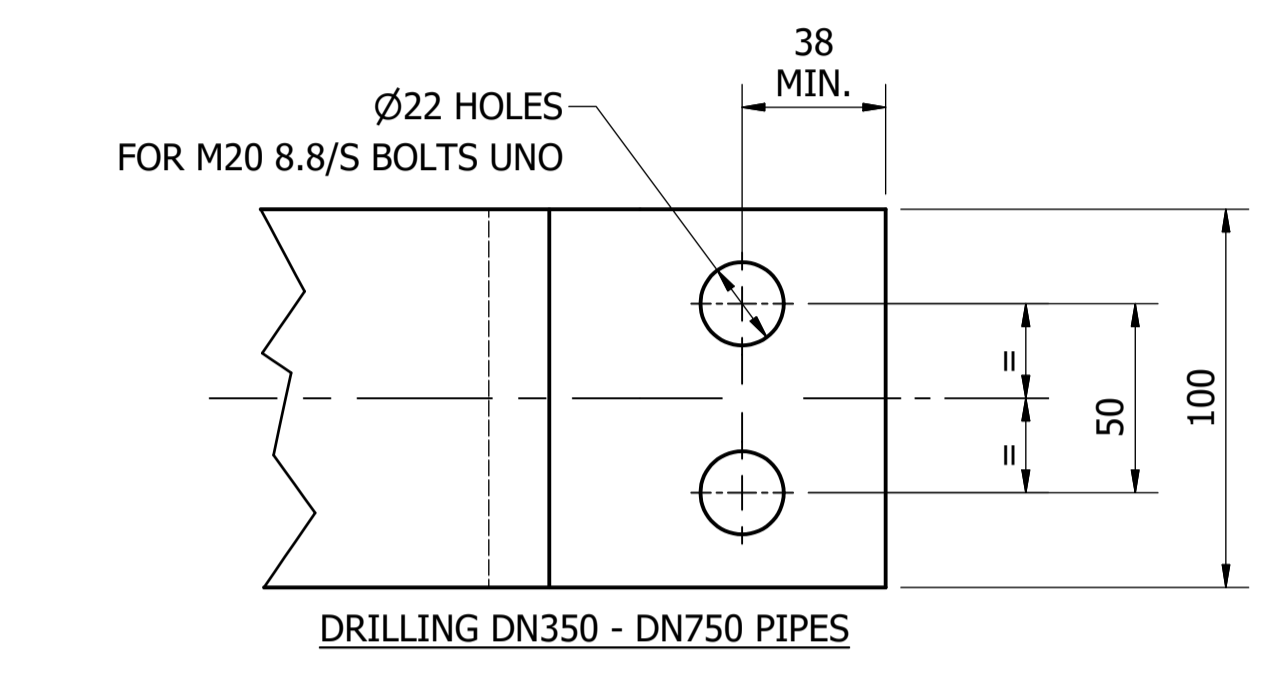
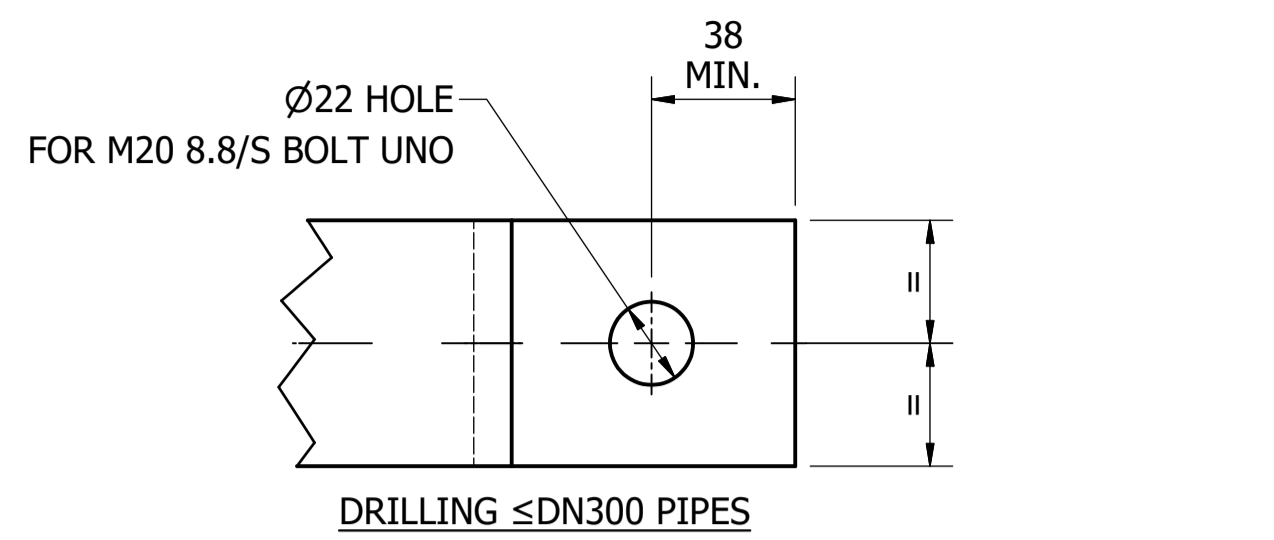


**ELEVATION**  
**VERTICAL PIPE SUPPORT - TYPE 1**  
 SCALE: 1 : 5

MATERIAL: CARBON STEEL  
 COATING: HOT DIP GALVANISED  
 FINISH COLOUR: N/A  
 MASS: APPROX. 50 kg @ 1500 HIGH, ≤DN300

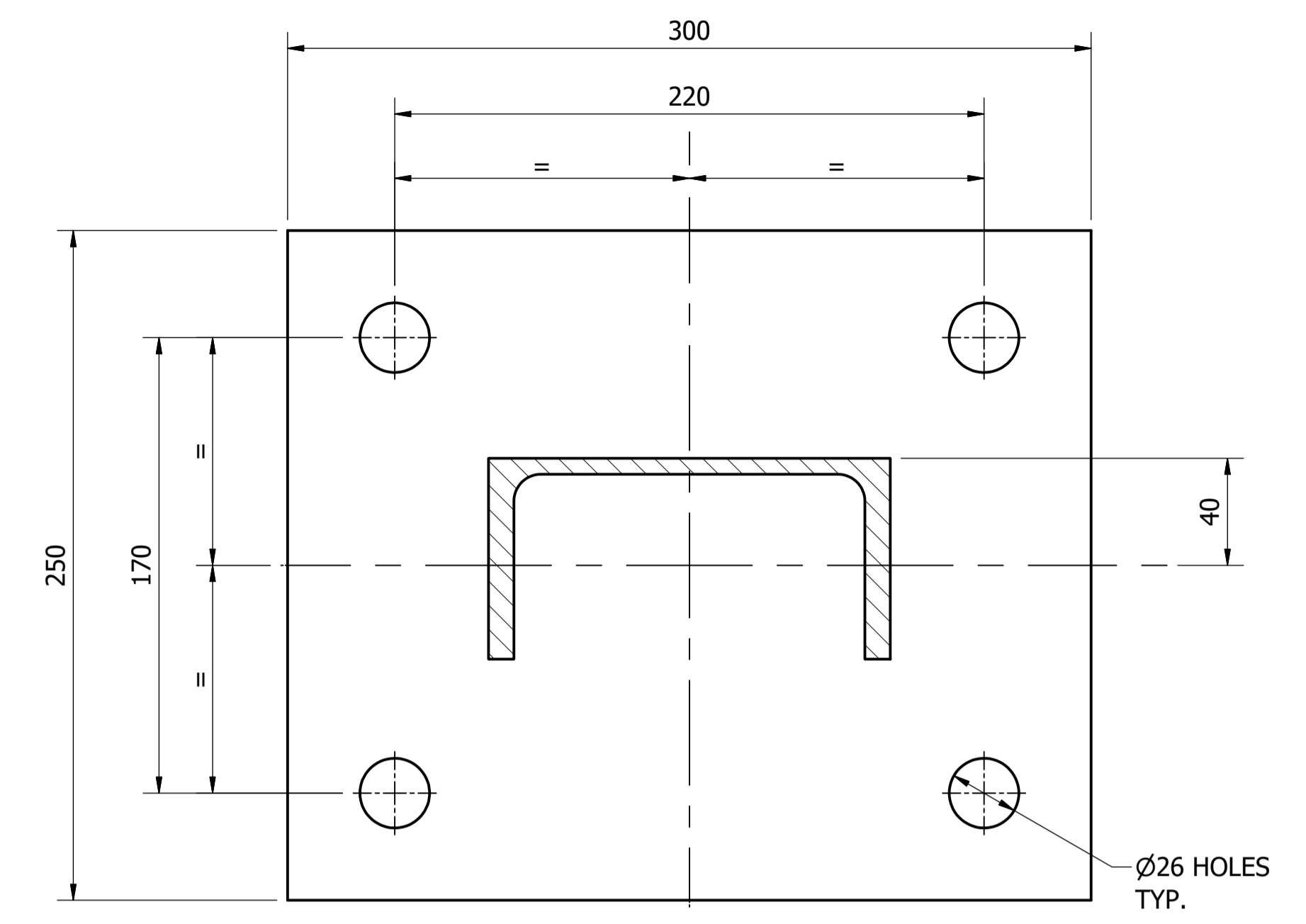


**ITEM S1**  
**DRILLING DETAILS**  
 SCALE: 1 : 2

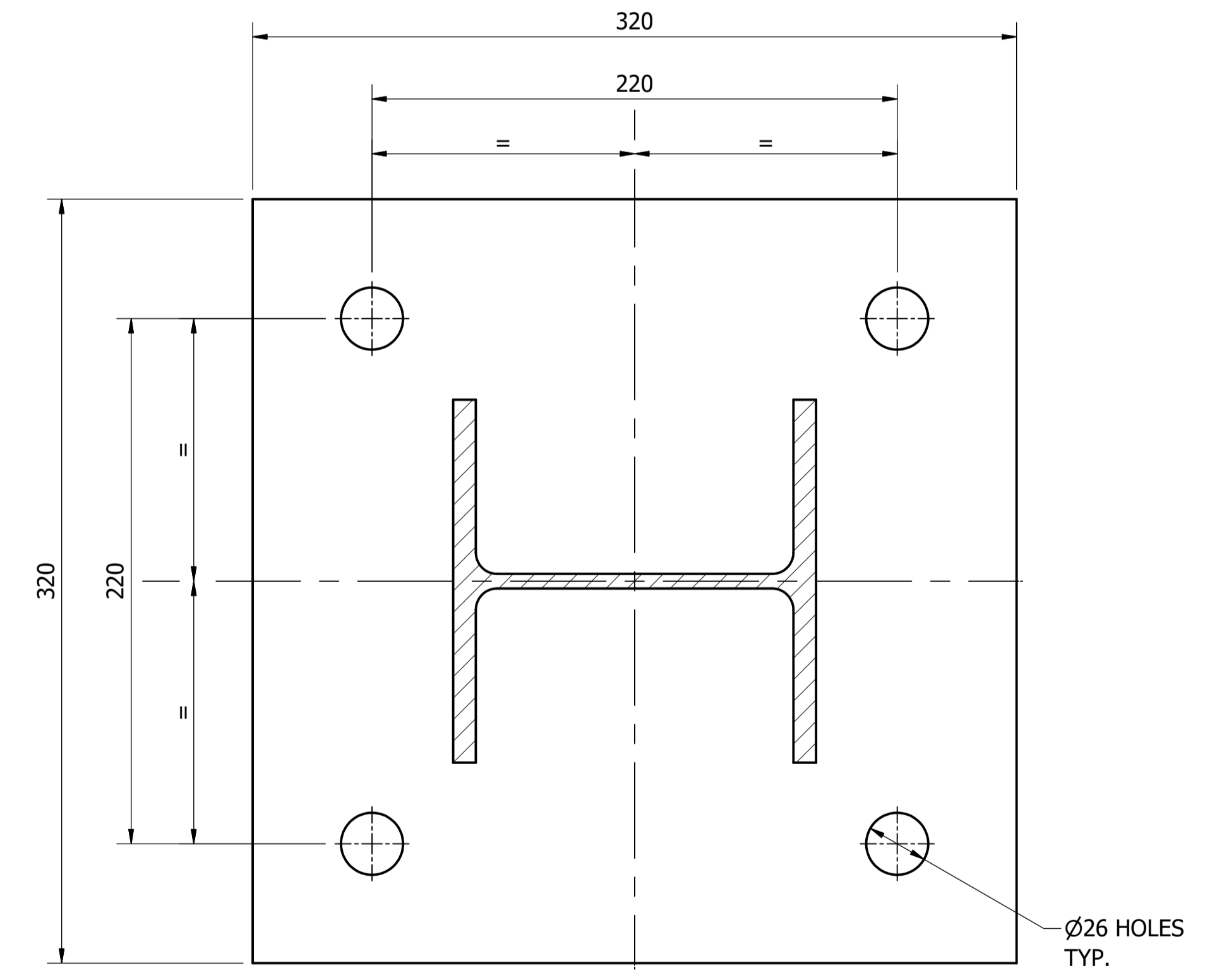
MEMBER SIZES			
MARK	DESCRIPTION	≤ DN300 PIPES	DN350 - DN750 PIPES
B1	PIPE SUPPORT BEAM	150 PFC	150 UC 23
C1	PIPE SUPPORT COLUMN	150 PFC	150 UC 23
P1	BASE PLATE	16 PL	20 PL
S1	PIPE CLAMP	65 x 10 FL	100 x 16 FL

**NOTES:**

- FOR STEELWORK NOTES REFER TO DRAWING: SD-9100.
- SUPPORT DESIGNED FOR VERTICAL LOADS ONLY.
- PIPE SUPPORTS APPLICABLE TO FLANGED OR WELDED PIPES ONLY.
- DESIGN LOAD CAPACITY (WORKING LOAD):
  - ≤ DN300 - 50 kN
  - DN350 TO DN750 - 100 kN
- OVERSIZE BOLT HOLES REQUIRE 4 mm PLATE WASHER INSTALLED UNDER BOTH NUT AND BOLT HEAD.
- OVERSIZE HOLD DOWN BOLT HOLES REQUIRE 4 mm PLATE WASHER INSTALLED UNDER BOTH NUT HEADS.
- HOLD DOWN ANCHOR BOLTS TO BE M20 SS316 CHEMICAL ANCHORS.
- 20 mm NON-SHRINK GROUT TO BE INSTALLED UNDER ALL PIPE SUPPORTS.



**SECTION A-A**  
 FOR PIPES ≤ DN300  
 SCALE: 1 : 2



**SECTION A-A**  
 FOR PIPES DN350 - DN750  
 SCALE: 1 : 2

ITEM	AMDT.
PN530101	

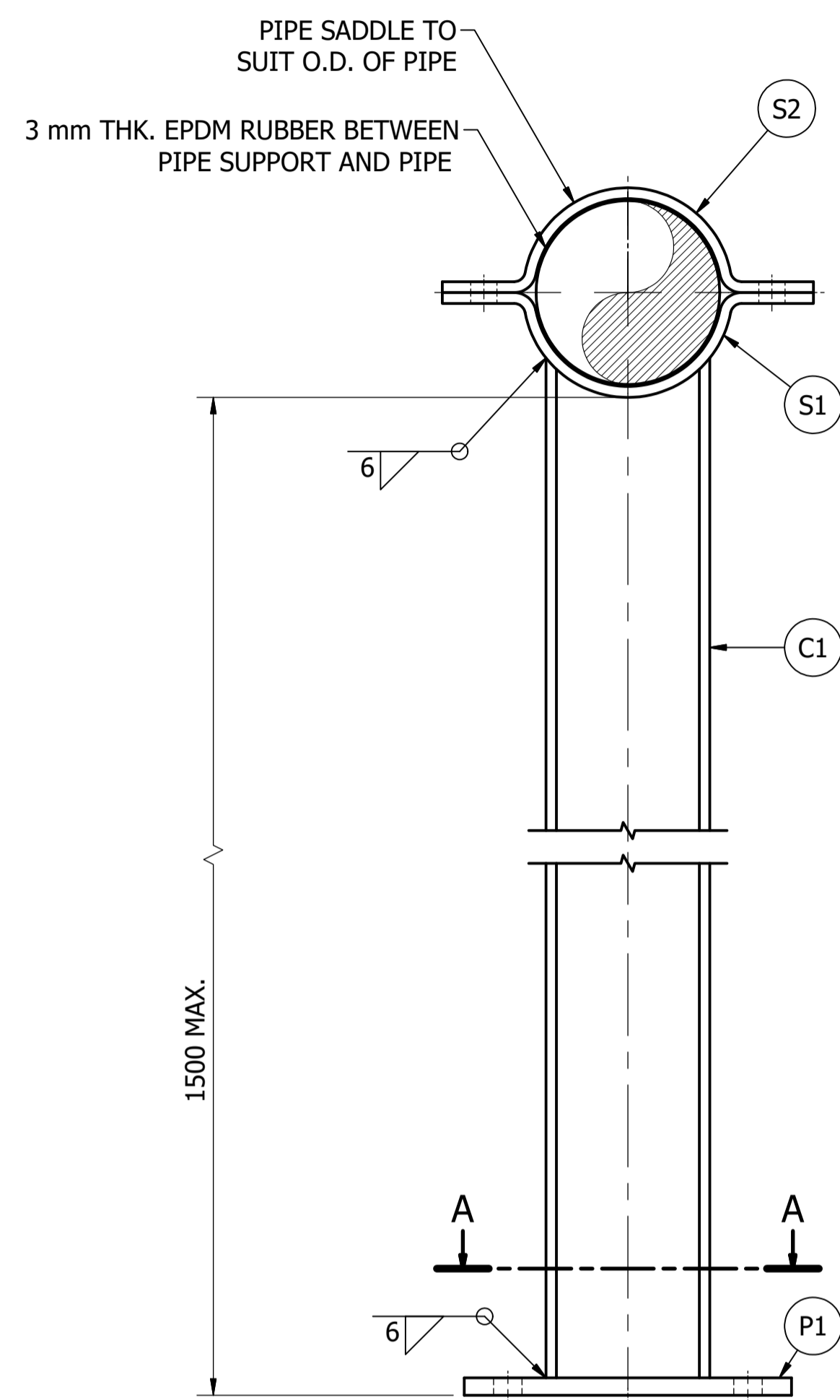
No.	ISSUE	DATE	DRAWN	CHECKED	AUTHORISED
A	INITIAL ISSUE	15/06/2018	M. Matusiak	K. Danenbergsons	D. Eager

DAM	RES	SPS
BWS	WAT	STP
WTP	SEW	
WPS	REC	



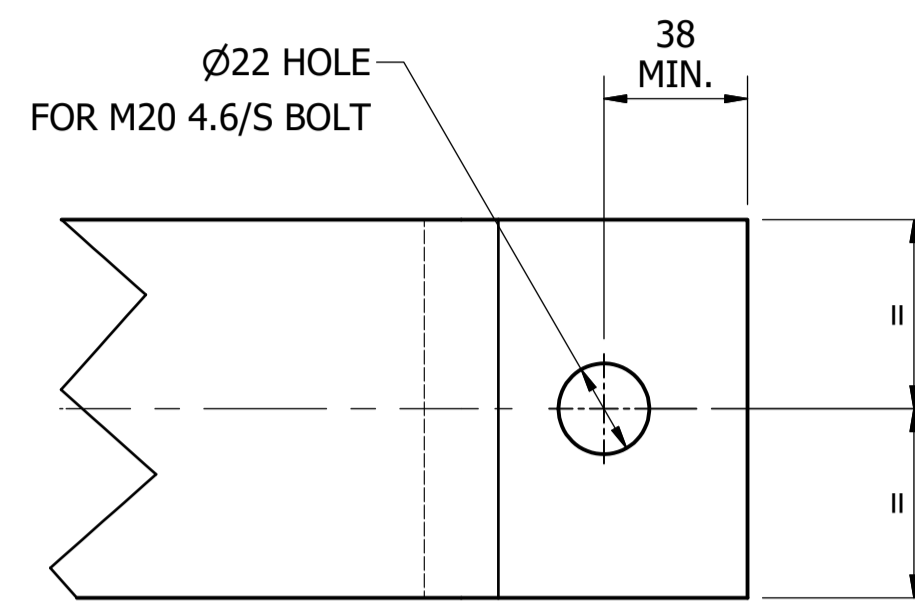
STANDARD DRAWING  
 PIPE SUPPORTS  
 HOT DIP GALVANISED  
 VERTICAL PIPE SUPPORT - TYPE 1  
 DETAILS

DRAWING STATUS	
Current	
SD-5301-D	
A1	ISSUE A

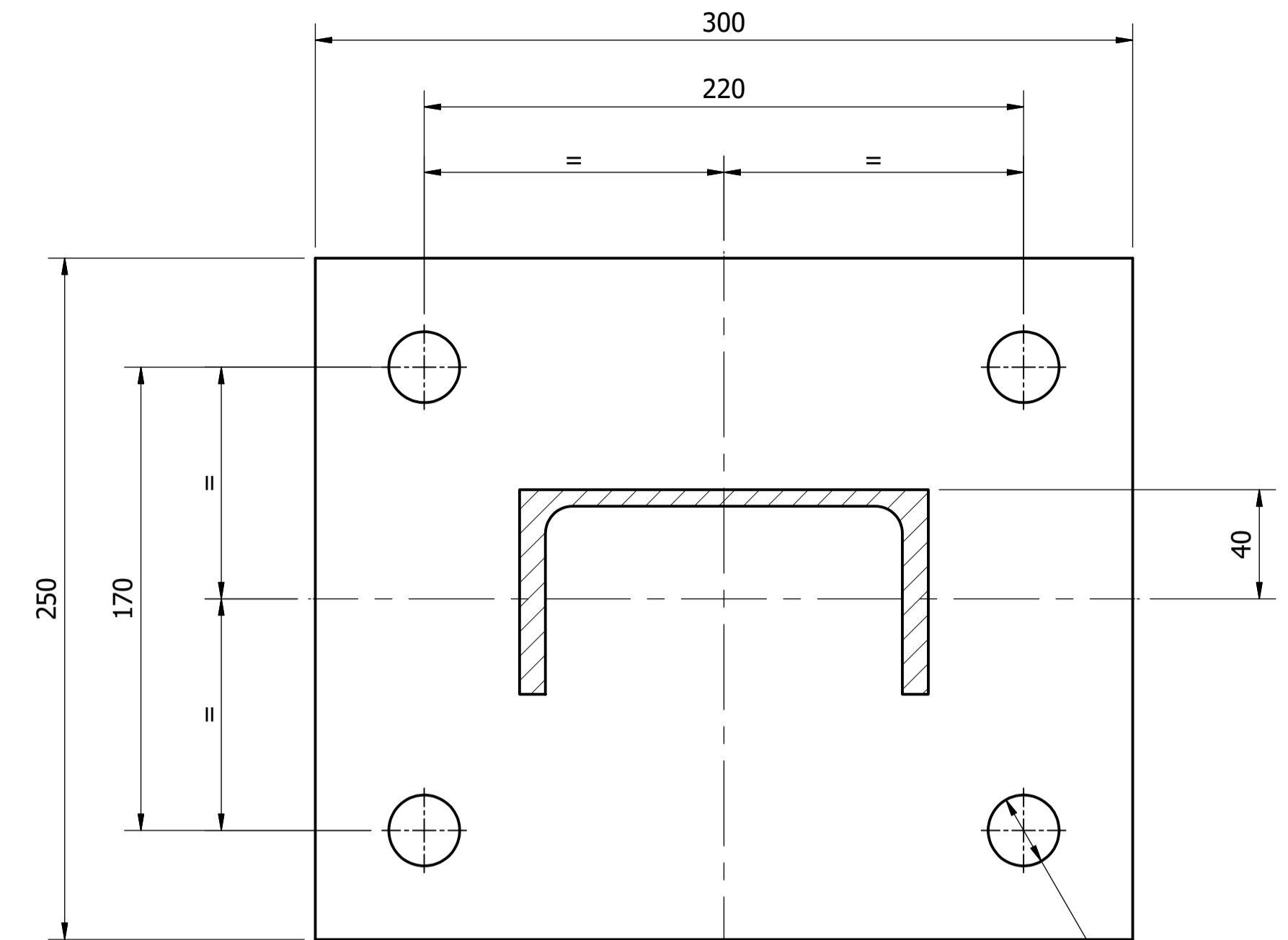


**ELEVATION**  
**VERTICAL PIPE SUPPORT - TYPE 2**  
 FOR PIPES ≤ DN300 ONLY  
 SCALE: 1 : 5

MATERIAL: CARBON STEEL  
 COATING: HOT DIP GALVANISED  
 FINISH COLOUR: N/A  
 MASS: APPROX. 45 kg @ 1500 HIGH



**ITEM S1, S2**  
**DRILLING DETAILS**  
 SCALE: 1 : 2



**SECTION A-A**  
 SCALE: 1 : 2

MEMBER SIZES		
MARK	DESCRIPTION	≤ DN300 PIPES
C1	PIPE SUPPORT COLUMN	150 PFC
P1	BASE PLATE	16 PL
S1	PIPE SADDLE BASE	100 x 10 FL
S2	PIPE SADDLE TOP	100 x 10 FL

**NOTES:**

- FOR STEELWORK NOTES REFER TO DRAWING: SD-9100.
- SUPPORT DESIGNED FOR VERTICAL LOADS ONLY.
- PIPE SUPPORTS APPLICABLE TO FLANGED OR WELDED PIPES ONLY.
- DESIGN LOAD CAPACITY (WORKING LOAD):
  - ≤ DN300 - 50 kN
- OVERSIZE BOLT HOLES REQUIRE 4 mm PLATE WASHER INSTALLED UNDER BOTH NUT AND BOLT HEAD.
- OVERSIZE HOLD DOWN BOLT HOLES REQUIRE 4 mm PLATE WASHER INSTALLED UNDER BOTH NUT HEADS.
- HOLD DOWN ANCHOR BOLTS TO BE M20 SS316 CHEMICAL ANCHORS.
- 20 mm NON-SHRINK GROUT TO BE INSTALLED UNDER ALL PIPE SUPPORTS.

**THIS PIPE SUPPORT IS APPLICABLE FOR PIPES ≤DN300 ONLY**

ITEM	AMDT.
PN530201	

No.	ISSUE	DATE	DRAWN	CHECKED	AUTHORISED
A	INITIAL ISSUE	15/06/2018	M. Matusiak	K. Danenbergsons	D. Eager

DAM	RES	SPS
BWS	WAT	STP
WTP	SEW	
WPS	REC	
ASSET AREA APPLICABILITY		



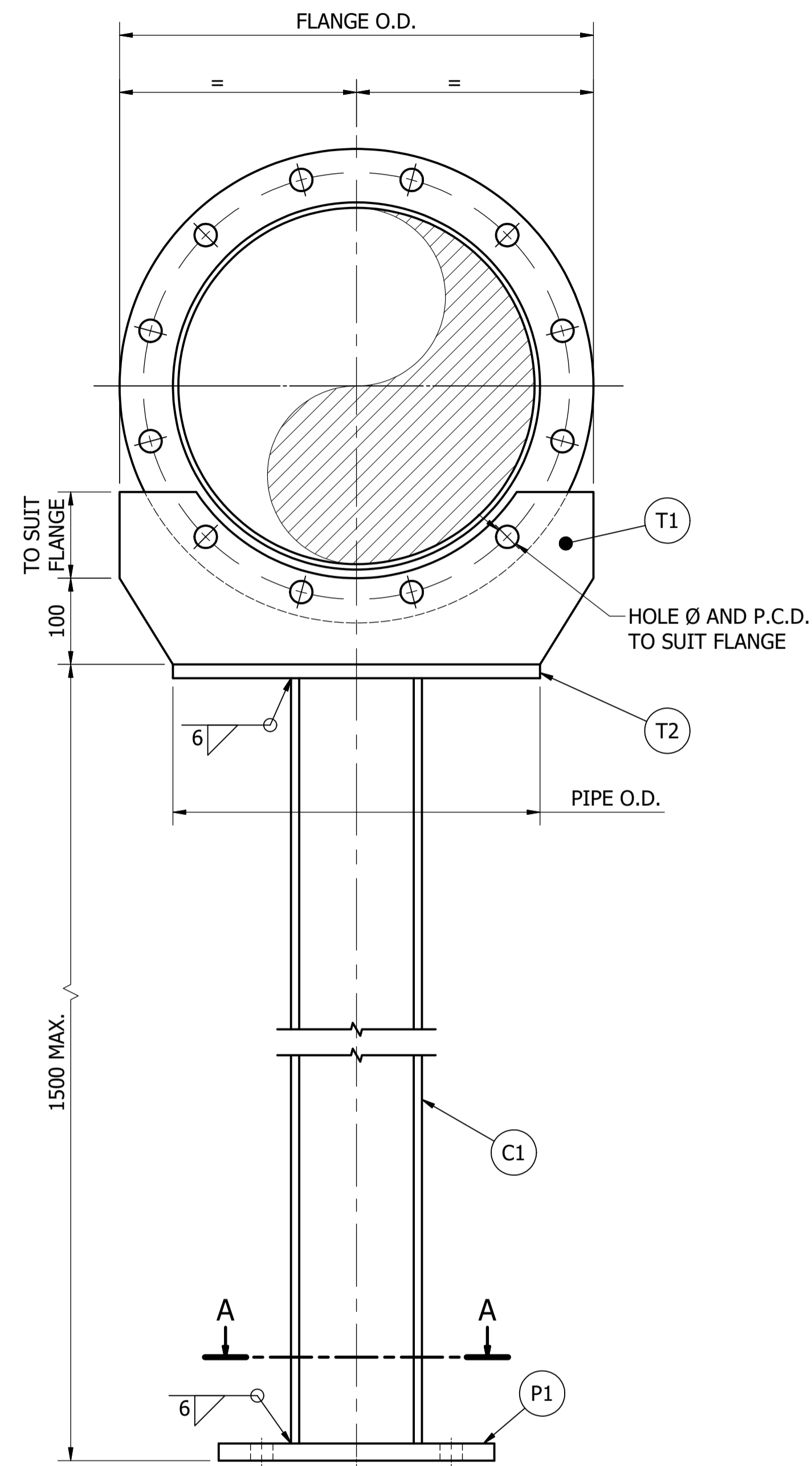
STANDARD DRAWING  
 PIPE SUPPORTS  
 HOT DIP GALVANISED  
 VERTICAL PIPE SUPPORT - TYPE 2  
 DETAILS

DRAWING STATUS  
 Current

**SD-5302-D**

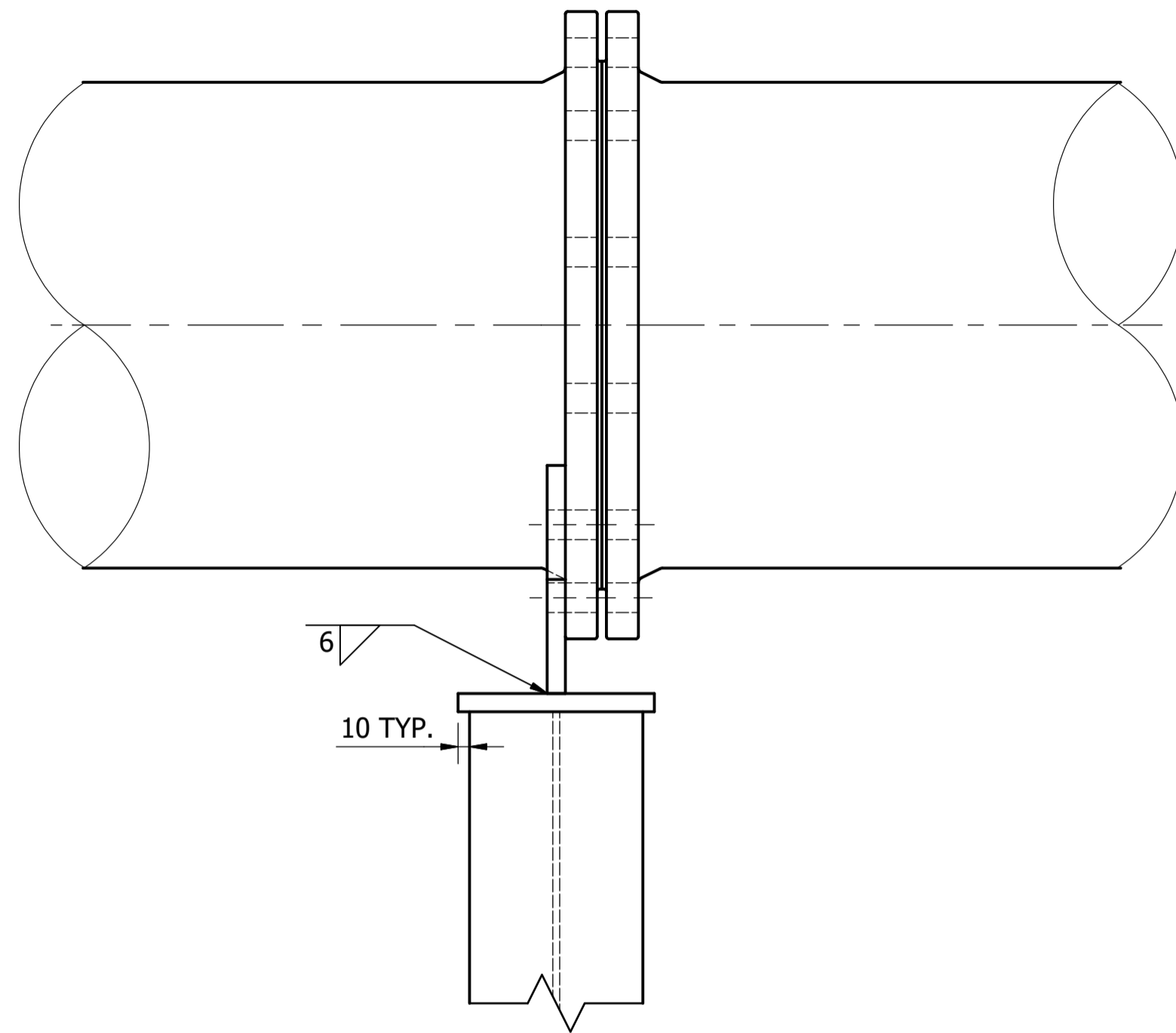
A1 © Icon Water 2017

ISSUE  
 A



**ELEVATION**  
**VERTICAL PIPE SUPPORT - TYPE 3**  
SCALE: 1 : 5

MATERIAL: CARBON STEEL  
COATING: HOT DIP GALVANISED  
FINISH COLOUR: N/A  
MASS: APPROX. 80 kg @ 1500 HIGH, DN375

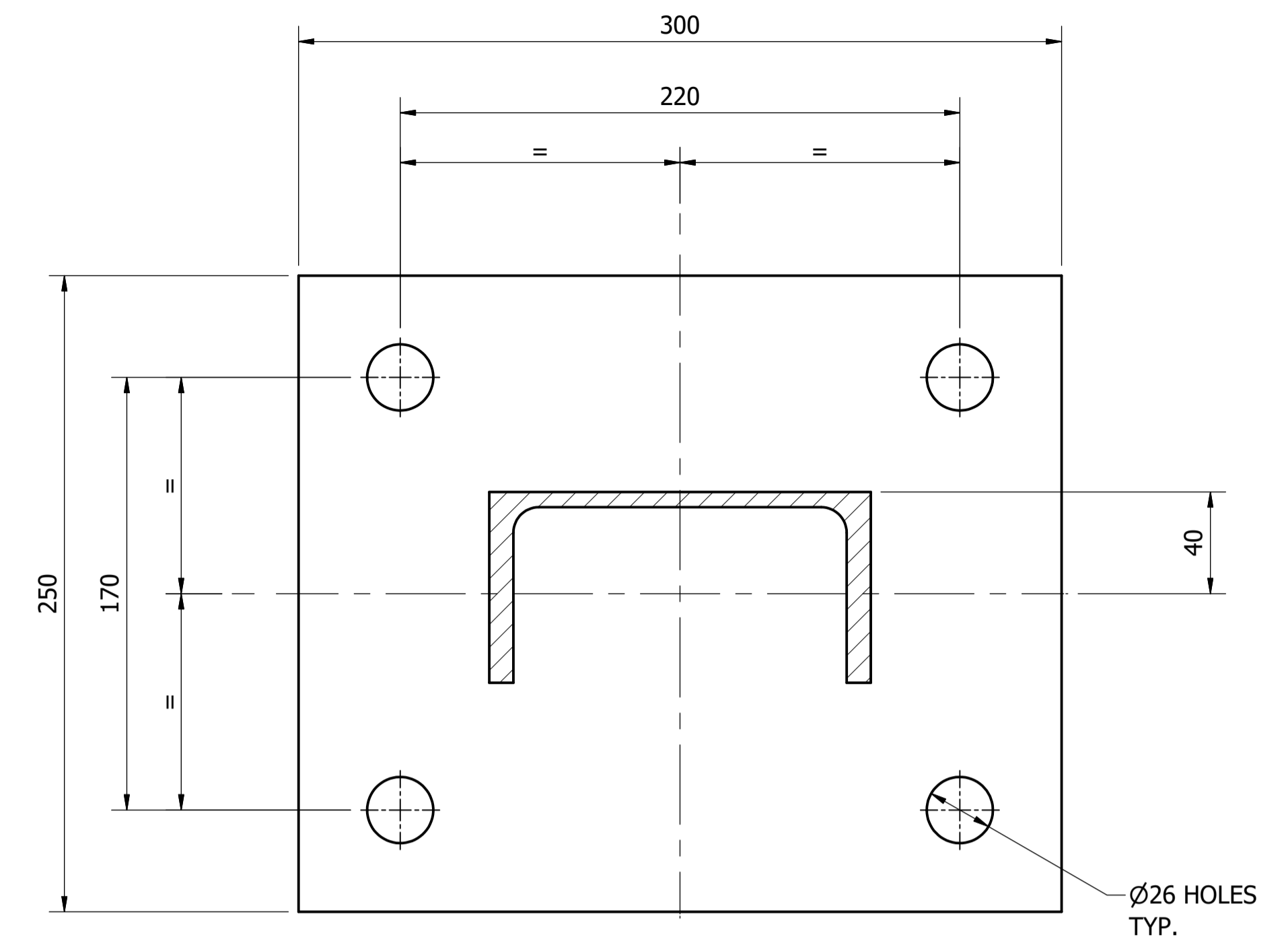


**SIDE ELEVATION**  
**CONNECTION TO PIPE**  
SCALE: 1 : 5

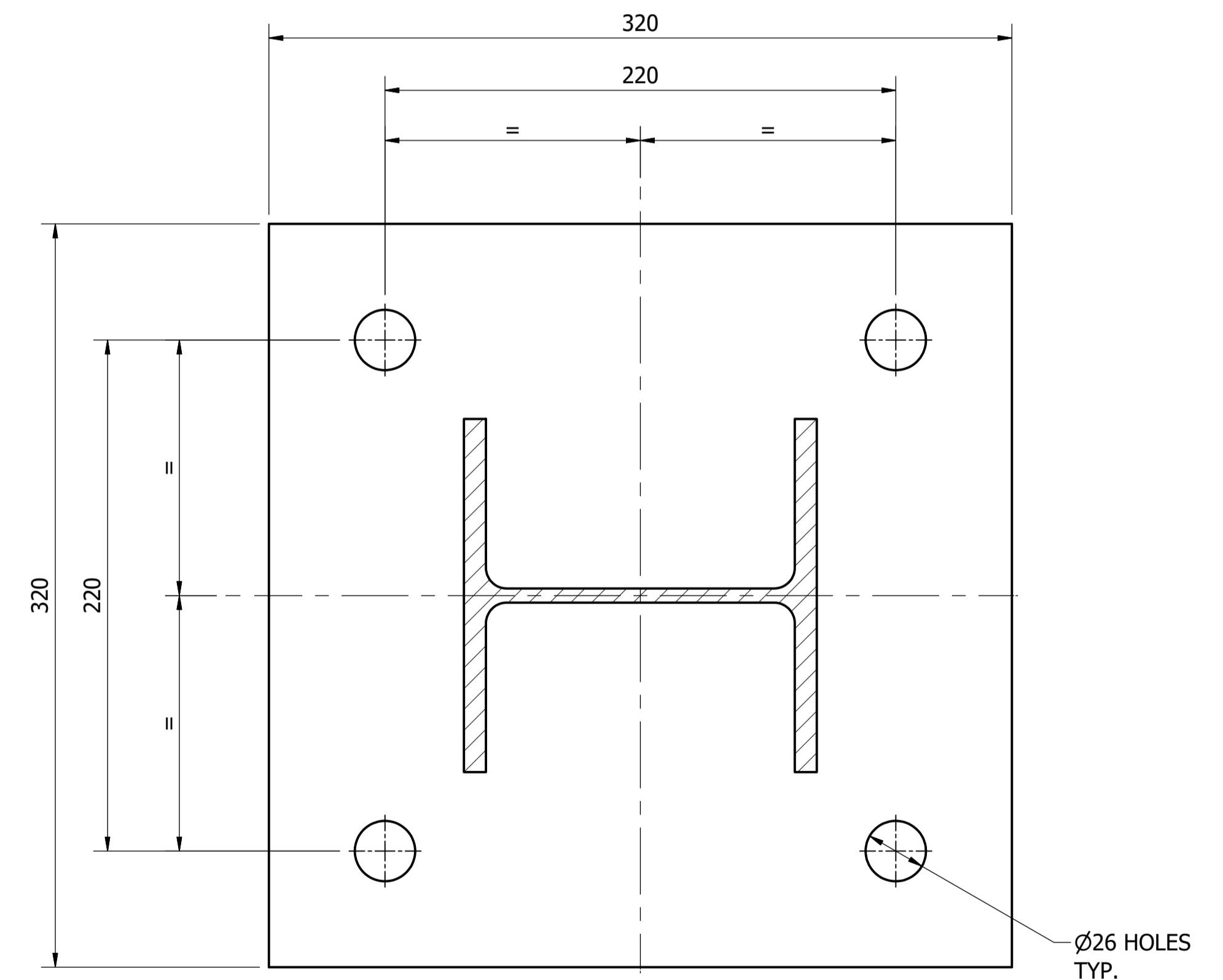
MEMBER SIZES			
MARK	DESCRIPTION	≤ DN300 PIPES	DN350 - DN750 PIPES
C1	PIPE SUPPORT COLUMN	150 PFC	150 UC 23
P1	BASE PLATE	16 PL	20 PL
T1	"T" CLEAT PIPE BRACKET	12 PL	16 PL
T2	"T" CLEAT TOP PLATE	12 PL	16 PL

**NOTES:**

- FOR STEELWORK NOTES REFER TO DRAWING: SD-9100.
- SUPPORT DESIGNED FOR VERTICAL LOADS ONLY.
- PIPE SUPPORTS APPLICABLE TO FLANGED OR WELDED PIPES ONLY.
- DESIGN LOAD CAPACITY (WORKING LOAD):
  - ≤ DN300 - 50 kN
  - DN350 TO DN750 - 100 kN
- OVERSIZE HOLD DOWN BOLT HOLES REQUIRE 4 mm PLATE WASHER INSTALLED UNDER BOTH NUT HEADS.
- HOLD DOWN ANCHOR BOLTS TO BE M20 SS316 CHEMICAL ANCHORS.
- 20 mm NON-SHRINK GROUT TO BE INSTALLED UNDER ALL PIPE SUPPORTS.



**SECTION A-A**  
**FOR PIPES ≤ DN300**  
SCALE: 1 : 2



**SECTION A-A**  
**FOR PIPES DN350 - DN750**  
SCALE: 1 : 2

ITEM	AMDT.
PN530301	

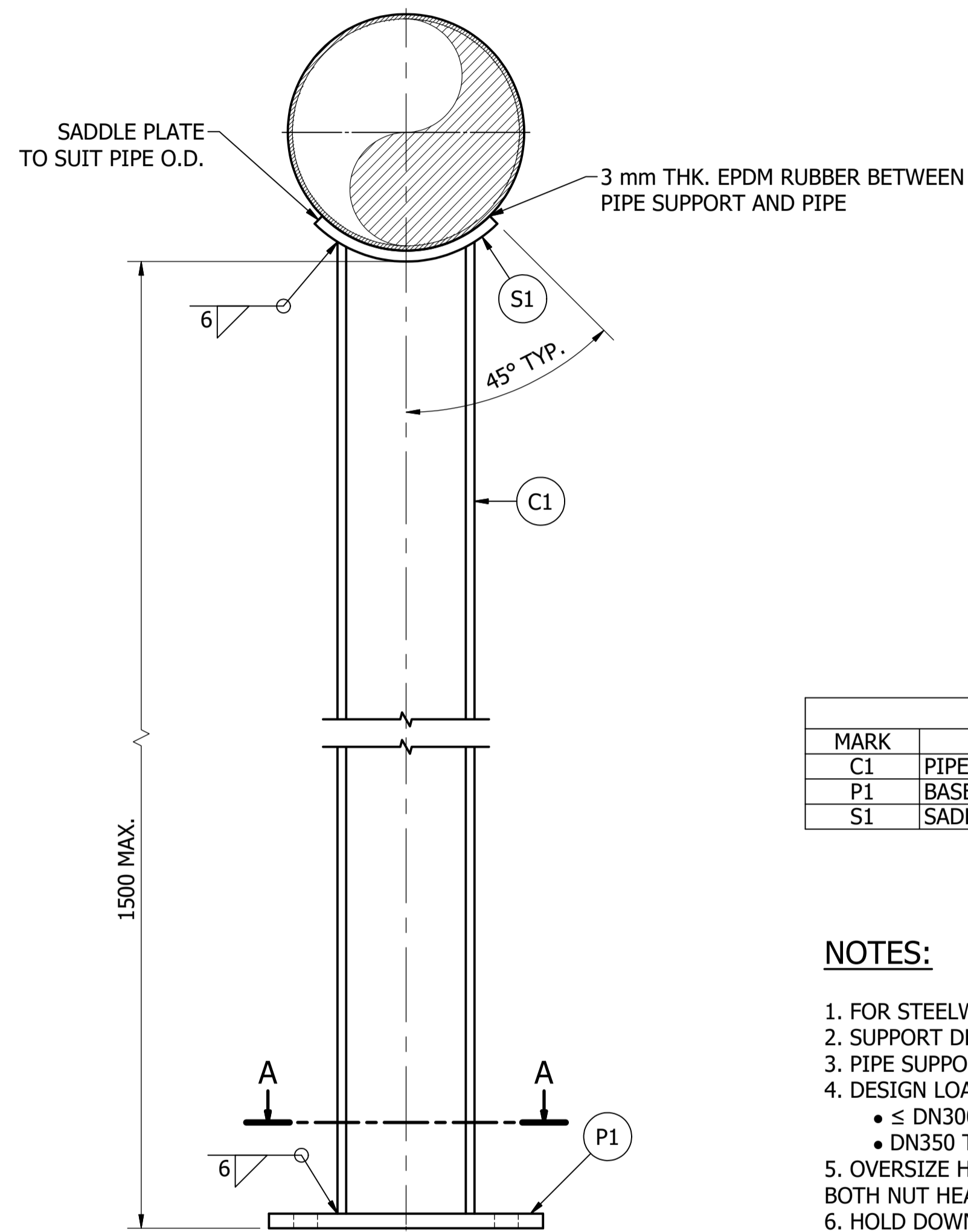
No.	ISSUE	DATE	DRAWN	CHECKED	AUTHORISED
A	INITIAL ISSUE	15/06/2018	M. Matusiak	K. Danenbergsons	D. Eager

DAM	RES	SPS
BWS	WAT	STP
WTP	SEW	
WPS	REC	
ASSET AREA APPLICABILITY		



STANDARD DRAWING  
PIPE SUPPORTS  
HOT DIP GALVANISED  
VERTICAL PIPE SUPPORT - TYPE 3  
DETAILS

DRAWING STATUS	
Current	
SD-5303-D	
A1	ISSUE A
© Icon Water 2017	



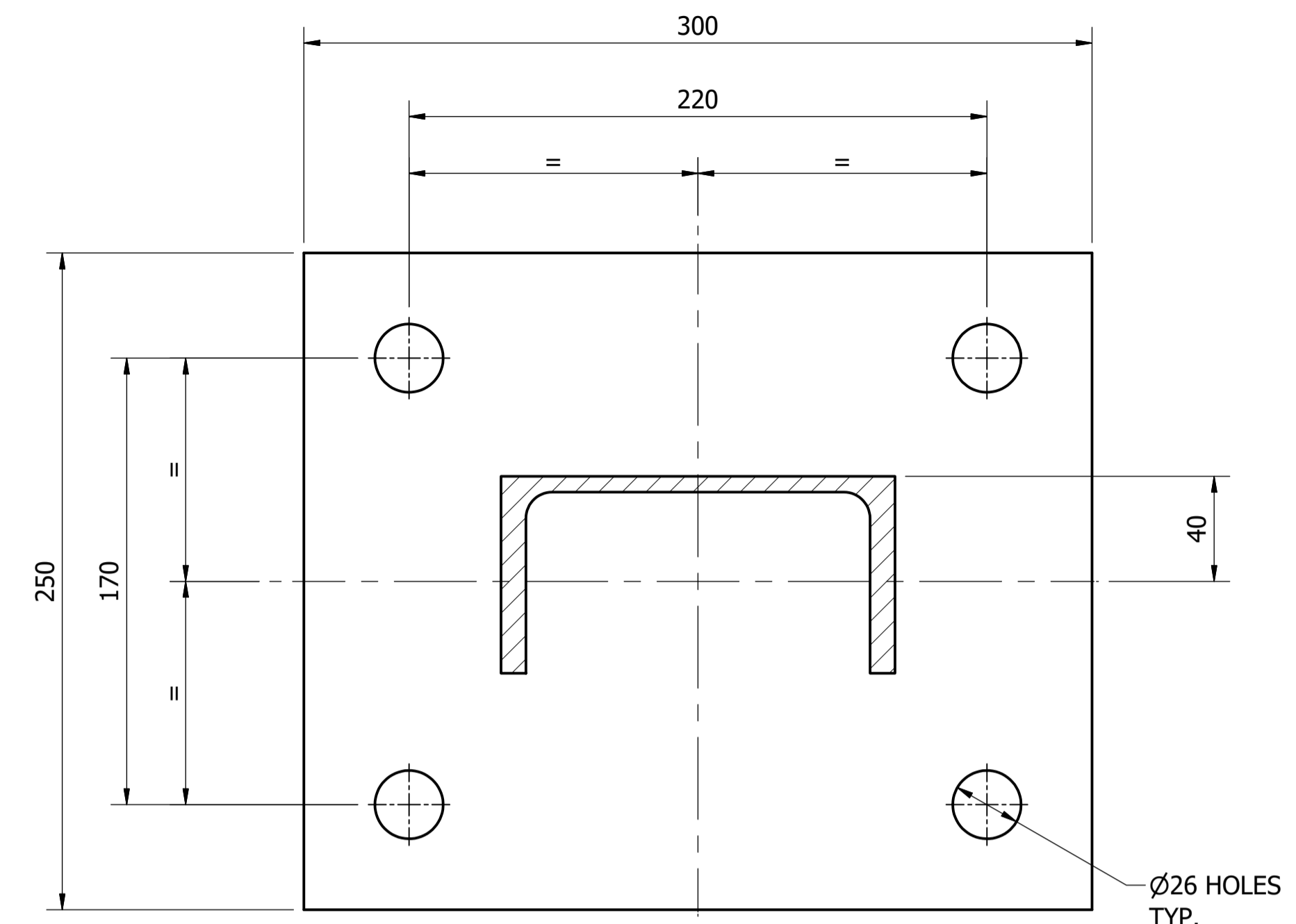
**ELEVATION**  
**VERTICAL PIPE SUPPORT - TYPE 4**  
 SCALE: 1 : 5

MATERIAL: CARBON STEEL  
 COATING: HOT DIP GALVANISED  
 FINISH COLOUR: N/A  
 MASS: APPROX. 40 kg @ 1500 HIGH, DN225

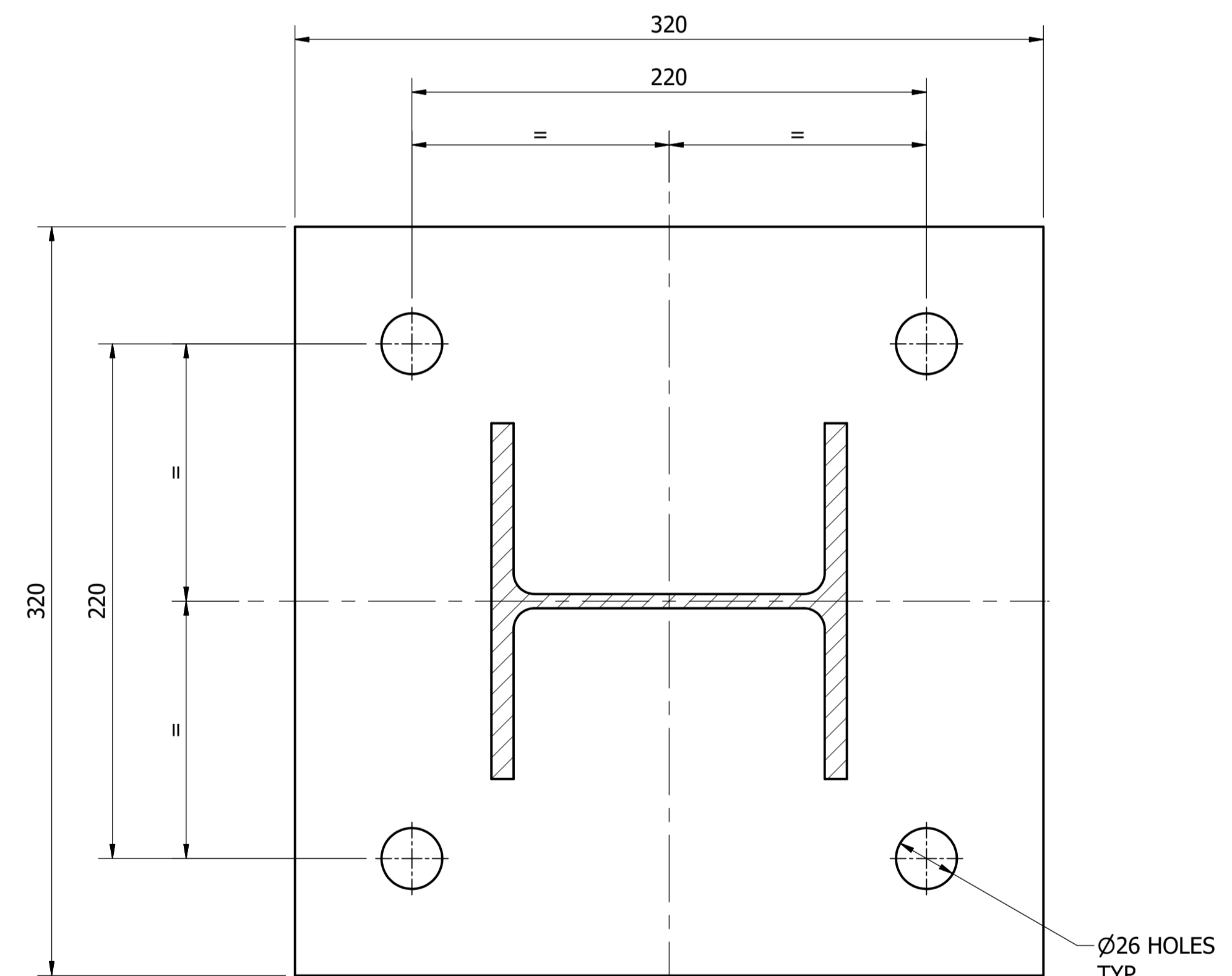
MEMBER SIZES			
MARK	DESCRIPTION	≤ DN300 PIPES	DN350 - DN750 PIPES
C1	PIPE SUPPORT COLUMN	150 PFC	150 UC 23
P1	BASE PLATE	16 PL	20 PL
S1	SADDLE PLATE	150 x 12 FL	150 x 12 FL

**NOTES:**

- FOR STEELWORK NOTES REFER TO DRAWING: SD-9100.
- SUPPORT DESIGNED FOR VERTICAL LOADS ONLY.
- PIPE SUPPORTS APPLICABLE TO FLANGED OR WELDED PIPES ONLY.
- DESIGN LOAD CAPACITY (WORKING LOAD):
  - ≤ DN300 - 50 kN
  - DN350 TO DN750 - 100 kN
- OVERSIZE HOLD DOWN BOLT HOLES REQUIRE 4 mm PLATE WASHER INSTALLED UNDER BOTH NUT HEADS.
- HOLD DOWN ANCHOR BOLTS TO BE M20 SS316 CHEMICAL ANCHORS.
- 20 mm NON-SHRINK GROUT TO BE INSTALLED UNDER ALL PIPE SUPPORTS.



**SECTION A-A**  
 FOR PIPES ≤ DN300  
 SCALE: 1 : 2



**SECTION A-A**  
 FOR PIPES DN350 - DN750  
 SCALE: 1 : 2

ITEM	AMDT.
PN530401	

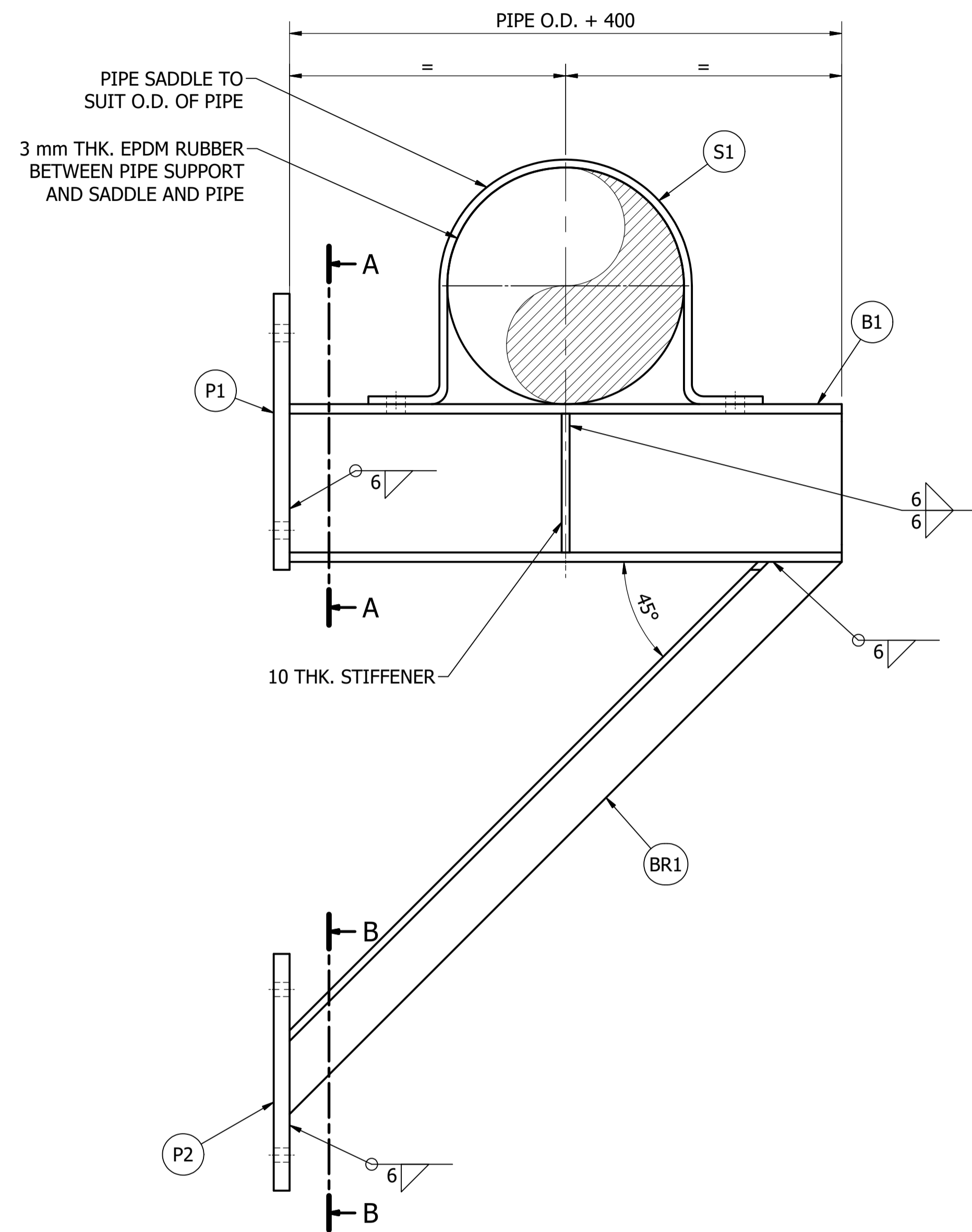
No.	ISSUE	DATE	DRAWN	CHECKED	AUTHORISED
A	INITIAL ISSUE	16/05/2018	M. Matusiak	K. Danenbergsons	D. Eager

ASSET AREA APPLICABILITY				
DAM	RES	SPS		
BWS	WAT	STP		
WTP	SEW			
WPS	REC			



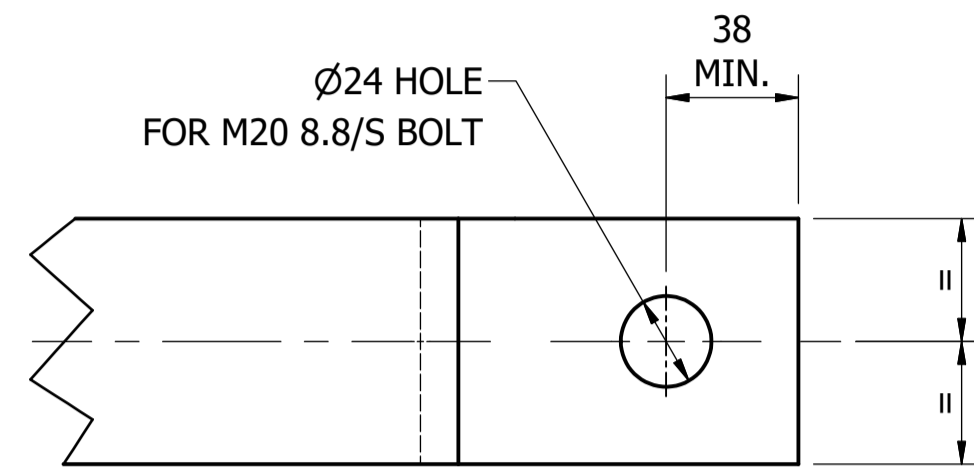
STANDARD DRAWING  
 PIPE SUPPORTS  
 HOT DIP GALVANISED  
 VERTICAL PIPE SUPPORT - TYPE 4  
 DETAILS

DRAWING STATUS		Current
SD-5304-D		ISSUE A
A1	© Icon Water 2017	



**ELEVATION**  
**BRACED CANTILEVER PIPE SUPPORT**  
SCALE: 1 : 5

MATERIAL: CARBON STEEL  
COATING: HOT DIP GALVANISED  
FINISH COLOUR: N/A  
MASS: APPROX. 60 kg @ DN300

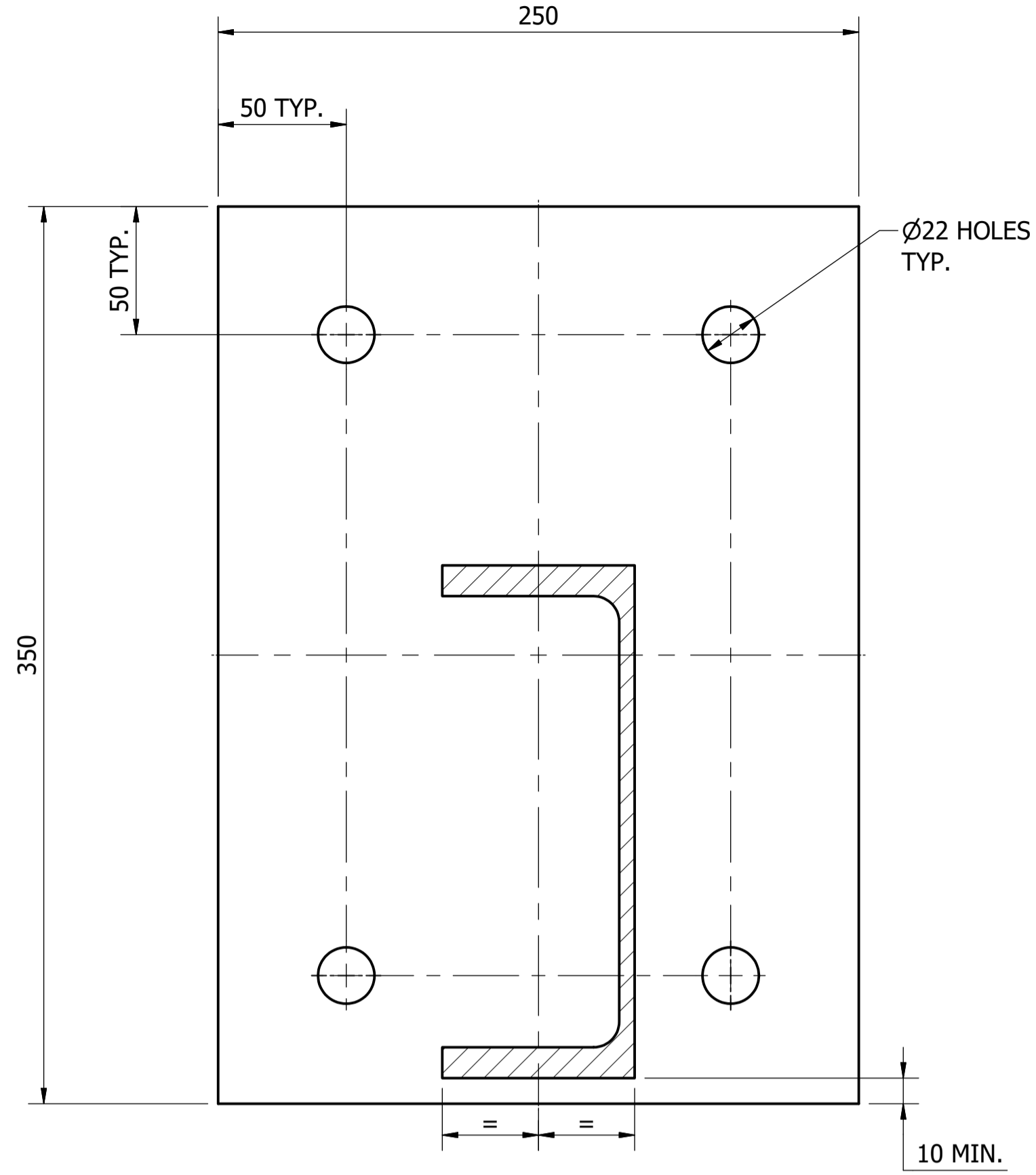


**ITEM S1**  
**DRILLING DETAILS**  
SCALE: 1 : 2

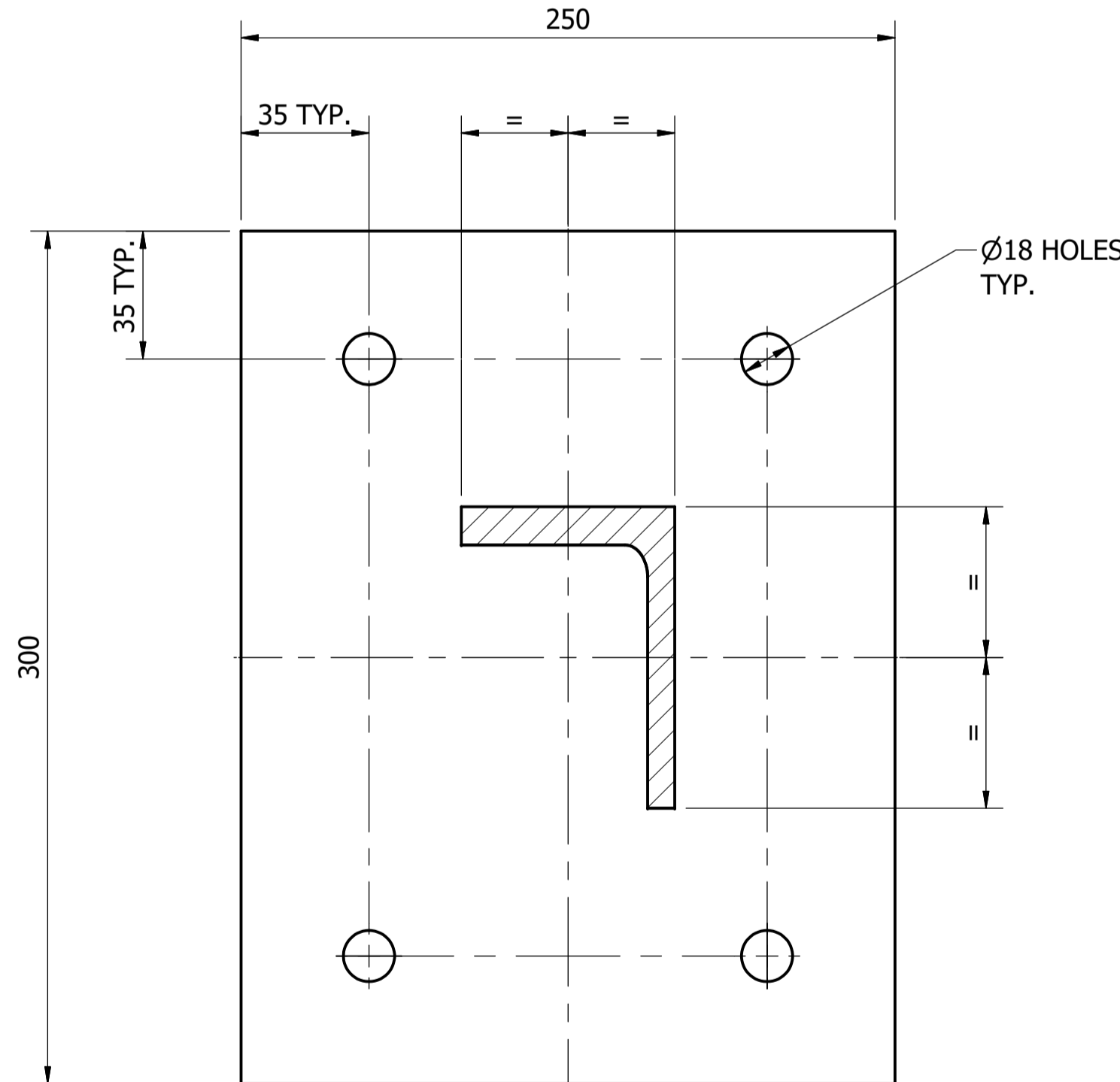
MEMBER SIZES		
MARK	DESCRIPTION	≤ DN300 PIPES
B1	PIPE SUPPORT BEAM	200 PFC
BR1	BRACE	75 x 10 EA
P1	UPPER END PLATE	20 PL
P2	LOWER END PLATE	20 PL
S1	PIPE SADDLE	65 x 10 FL

- NOTES:**
- FOR STEELWORK NOTES REFER TO DRAWING: SD-9100.
  - PIPE SUPPORTS APPLICABLE TO FLANGED OR WELDED PIPES ONLY.
  - DESIGN LOAD CAPACITY (WORKING LOAD):
    - ≤ DN300 - 50 kN
  - HOLD DOWN ANCHOR BOLTS TO BE M20 SS316 CHEMICAL ANCHORS & M16 SS316 FOR TOP AND BOTTOM PLATES RESPECTIVELY.
  - 10 mm NON-SHRINK GROUT TO BE INSTALLED UNDER ALL PIPE SUPPORTS.
  - PIPE SUPPORT SUBSTRATE MATERIAL TO BE CONCRETE NOT BRICK. FOR CONNECTION TO BRICK SUBSTRATE ANCHOR CONNECTION TO BE ASSESSED.

**THIS PIPE SUPPORT IS APPLICABLE FOR PIPES ≤DN300 ONLY**



**SECTION A-A**  
SCALE: 1 : 2



**SECTION B-B**  
SCALE: 1 : 2

ITEM	AMDT.
PN530501	

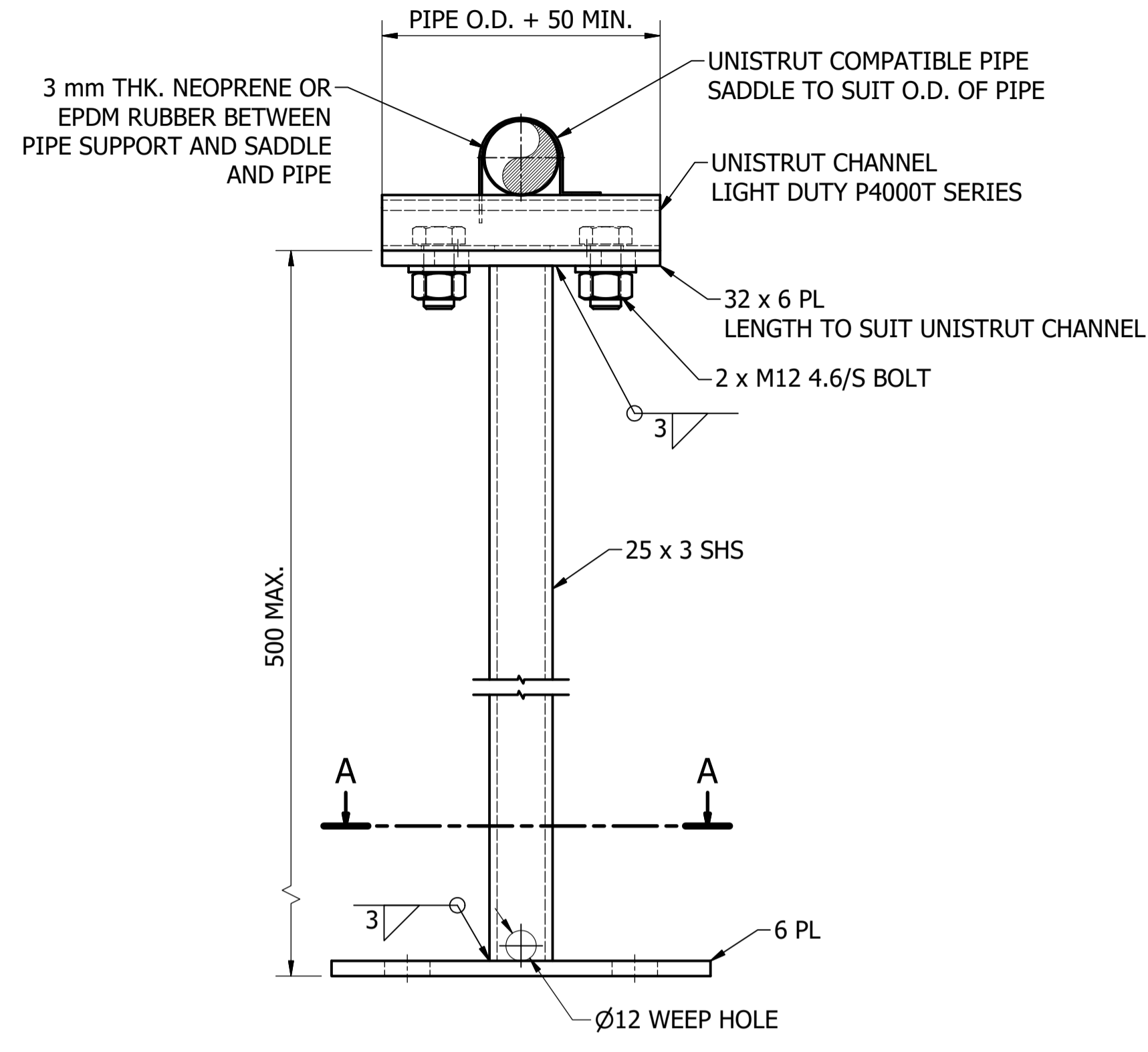
No.	ISSUE	DATE	DRAWN	CHECKED	AUTHORISED
A	INITIAL ISSUE	16/05/2018	M. Matusiak	K. Danenbergs	D. Eager

DAM	RES	SPS
BWS	WAT	STP
WTP	SEW	
WPS	REC	

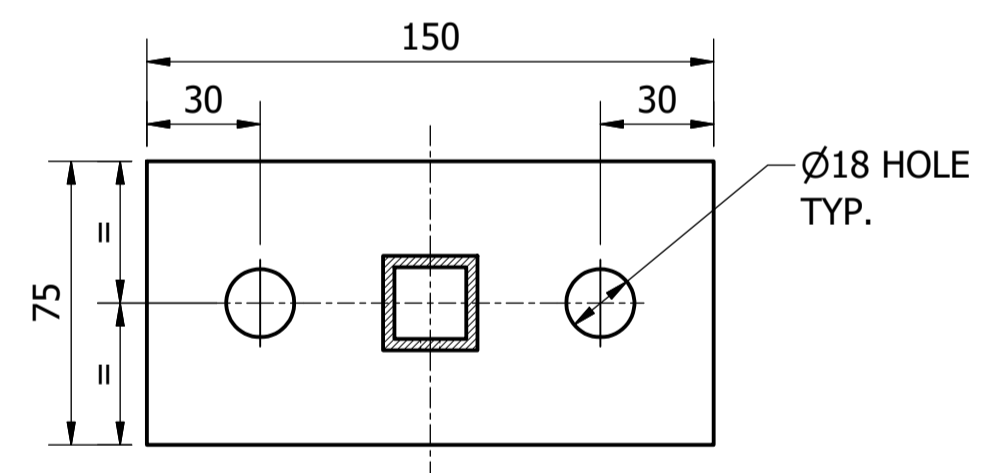


STANDARD DRAWING  
PIPE SUPPORTS  
HOT DIP GALVANISED  
BRACED CANTILEVER PIPE SUPPORT  
DETAILS

DRAWING STATUS		Current
SD-5305-D		ISSUE A
A1	© Icon Water 2017	



**ELEVATION**  
SCALE: 1 : 2



**SECTION A-A**  
**BASE PLATE**  
SCALE: 1 : 2

THIS PIPE SUPPORT IS APPLICABLE FOR PIPES ≤ DN80 ONLY

**LIGHT DUTY VERTICAL**  
**PIPE SUPPORT**

MATERIAL: CARBON STEEL  
COATING: HOT DIP GALVANISED  
FINISH COLOUR: N/A  
MASS: 2.5 kg @ 500 HIGH

**NOTES:**

1. FOR STEELWORK NOTES REFER TO DRAWING SD-9100.
2. HOLD DOWN ANCHOR BOLTS TO BE M16 SS316 CHEMICAL ANCHORS.
3. 20 mm NON-SHRINK GROUT TO BE INSTALLED UNDER ALL PIPE SUPPORTS.

ITEM	AMDT.
PN530601	

No.	ISSUE	DATE	DRAWN	CHECKED	AUTHORISED
A	INITIAL ISSUE	15/06/2018	S. Essery	K. Danenbergsons	D. Eager

ASSET AREA APPLICABILITY					
DAM	<input checked="" type="checkbox"/>	RES	<input checked="" type="checkbox"/>	SPS	<input checked="" type="checkbox"/>
BWS	<input checked="" type="checkbox"/>	WAT	<input checked="" type="checkbox"/>	STP	<input checked="" type="checkbox"/>
WTP	<input checked="" type="checkbox"/>	SEW	<input checked="" type="checkbox"/>		
WPS	<input checked="" type="checkbox"/>	REC	<input checked="" type="checkbox"/>		



STANDARD DRAWING  
PIPE SUPPORTS  
HOT DIP GALVANISED  
LIGHT DUTY TYPE  
DETAILS

DRAWING STATUS		Current
SD-5306-D		ISSUE A
A1	© Icon Water 2017	