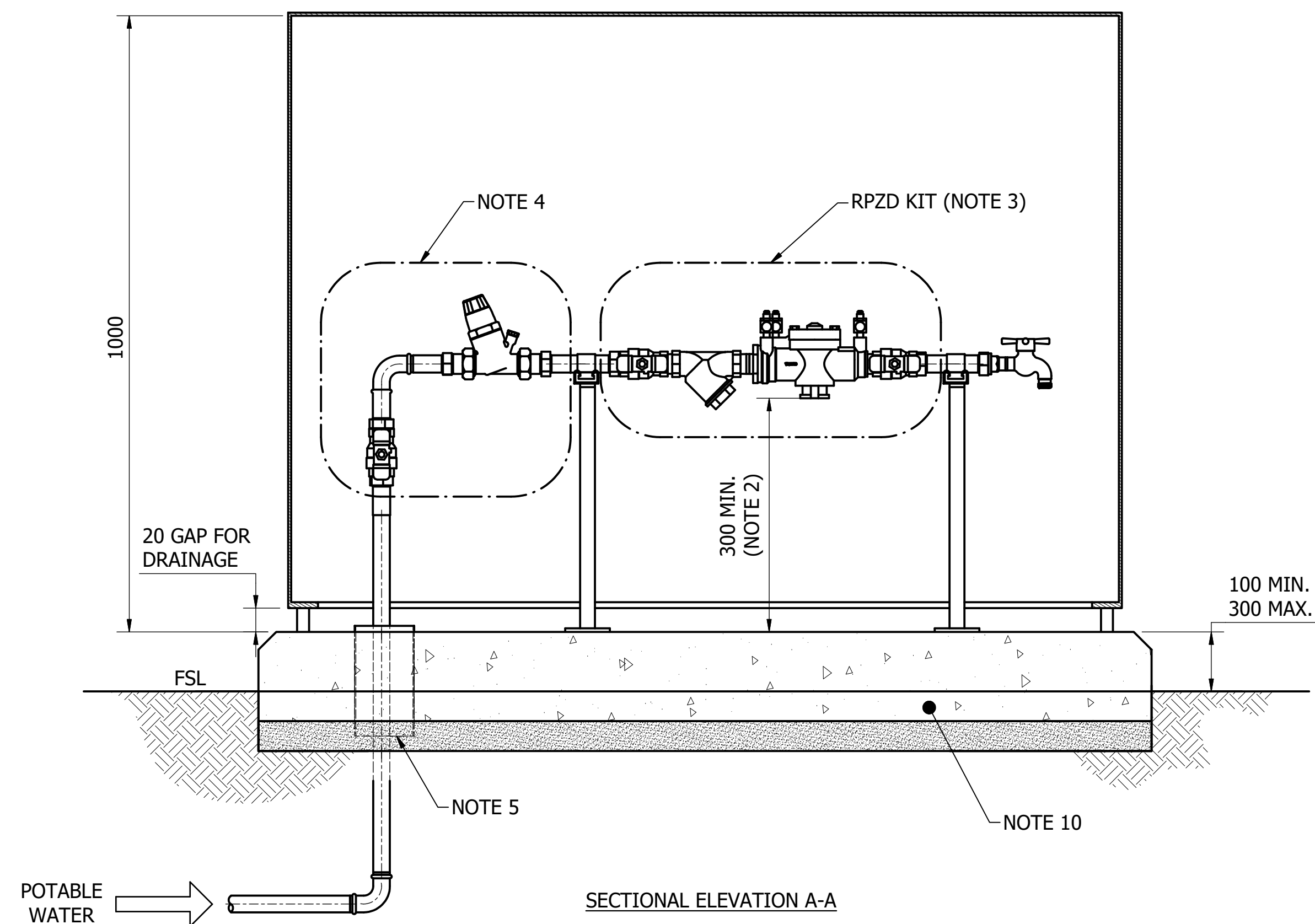
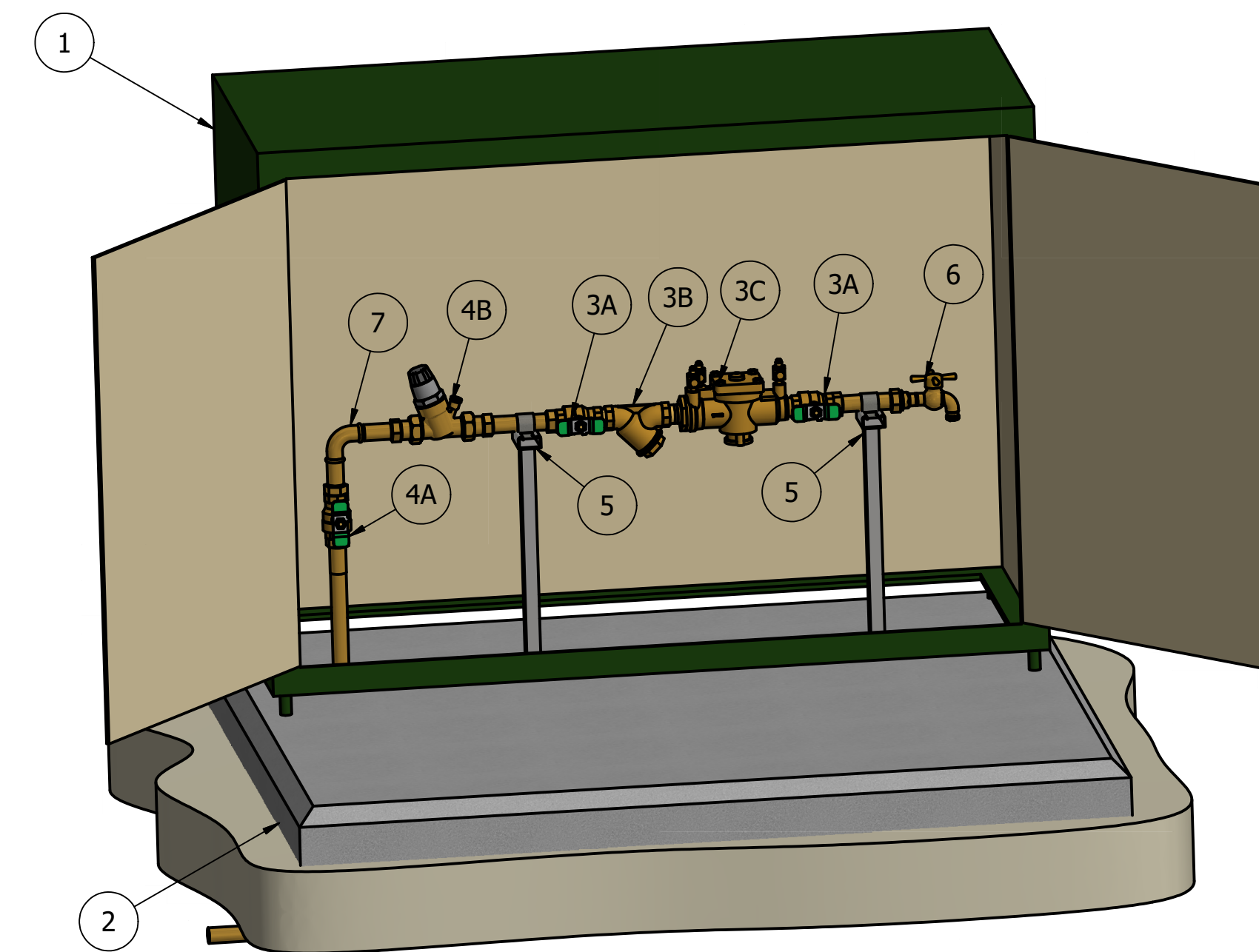


PLAN



SECTIONAL ELEVATION A-A

RPZD STATION



ISOMETRIC VIEW

SCALE: NTS

PARTS LIST		
ITEM	DESCRIPTION	QTY
1	GALVANISED STEEL ENCLOSURE, INSULATED, REFER NOTE 7 & 8	1
2	REINFORCED CONCRETE SLAB, REFER NOTE 10	1
3A	ISOLATING BALL VALVE, REFER NOTE 3	2
3B	Y STRAINER, REFER NOTE 3	1
3C	REDUCED PRESSURE ZONE DEVICE, REFER NOTE 3	1
4A	ISOLATING BALL VALVE, NOTE 4	1
4B	PRESSURE REDUCING VALVE, ADJUSTABLE TYPE TO AS 1357.2	1
5	PIPE SUPPORT - PN530601 ON DRAWING SD-5306, C/W HOLD DOWN BOLTS ETC.	2
6	HOSE TAP, BRASS "CLICK ON" TYPE, C/W TAP ADAPTER FOR STANDARD HOSE CONNECTION	1
7	COPPER PIPE & FITTINGS AS 1432 - TYPE B HARD DRAWN	AS REQ'D

NOTES

- ALL VALVES AND FITTINGS SHALL HAVE WATERMARK CERTIFICATION AND BE SELECTED FROM ICON WATER'S APPROVED PRODUCTS LIST.
- BACKFLOW PREVENTION DETAILS SHALL BE IN FULL COMPLIANCE WITH AS/NZS 3500.
- ITEMS 3A, 3B AND 3C ARE TO BE PURCHASED AS A COMPLETE KIT.
- ITEMS 4A AND 4B ARE ONLY REQUIRED WHEN THE SUPPLY (MAINS) PRESSURE IS GREATER THAN 900 kPa.
- INCOMING SUPPLY RISER SHALL BE LAGGED AND NOT IN DIRECT CONTACT WITH STEEL OR CONCRETE SURFACES.
- ALL PIPEWORK AND TUBING OF SIZES DN50 AND SMALLER SHALL BE INSULATED TO PREVENT FREEZING. REFER TO ICON WATER'S APPROVED PRODUCTS LIST FOR ACCEPTABLE INSULATION.
- THE PIPEWORK ENCLOSURE SHALL HAVE KNAUF "CLIMAFOAM XPS" INSULATION BOARDS INSTALLED TO ALL INTERNAL SURFACES (INCLUDING DOORS) OF 30 mm MIN. THICKNESS. ALTERNATIVES SUCH AS BRICK OR BLOCK CONSTRUCTION ARE ALSO ACCEPTABLE IN LIEU OF GALVANISED STEEL.
- THE ENCLOSURE FINISH COLOUR SHALL BE NOMINATED BY THE DESIGNER TO SUIT THE PREVAILING ARCHITECTURE / STREETSCAPE. THE FINISH COLOUR MUST BE SHOWN ON THE DESIGN DRAWINGS FOR ACCEPTANCE BY ICON WATER. OTHERWISE, THE DEFAULT FINISH COLOUR SHALL BE G66 ENVIRONMENT GREEN TO AS 2700.
- ALL DOORS SHALL HAVE LOCKING DEVICES PROVIDED IN ACCORDANCE WITH ICON WATER'S SECURITY POLICY.
- THE REINFORCED CONCRETE SLAB DETAILS AND SUB-BASE DETAILS SHALL BE DETAILED ON THE PROJECT SPECIFIC DRAWINGS AND SHALL BE APPROVED FOR THE SPECIFIC SITE CONDITIONS.

No.	ISSUE	DATE	DRAWN	CHECKED	AUTHORISED
A	INITIAL ISSUE	15/06/2018	S. Essery	K. Danenbergsons	D. Eager
B	ENCLOSURE COLOUR NOTE ADDED	10/09/2018	S. Essery	K. Danenbergsons	C. Patrick

ASSET AREA APPLICABILITY				
DAM	RES	SPS	X	
BWS	WAT	STP	X	
WTP	SEW			
WPS	REC			



STANDARD DRAWING
RPZD STATION
GENERAL ARRANGEMENT AND NOTES

DRAWING STATUS	
Current	
SD-5500-C	
A1	ISSUE B
© Icon Water 2017	