

NOTES :

1. REFER TO SD-1100 AND SD-1101 FOR P & ID SYMBOLS.
2. REFER TO SD-5500 TO SD-5503 INCLUSIVE FOR DN25 AND/OR DN50 RPZD STATION DETAILS.
3. THIS "TYPICAL" P & ID BASED ON A DUTY/STANDBY PUMP STATION FOR A DESIGN FLOW OF 15 l/s APPROX.
4. EXAMPLE DATA PROVIDED. DESIGNER SHALL MODIFY DETAILS TO MATCH SPECIFIC PROJECT.

No.	ISSUE	DATE	DRAWN	CHECKED	AUTHORISED
A	INITIAL ISSUE	15/06/2018	C. Dickson	K. Danenbergsons	D. Eager
B	NOTES AND TEXT UPDATE	17/09/2018	S. Essey	K. Danenbergsons	C. Patrick

ASSET AREA APPLICABILITY
DAM
BWS
WTP
WPS

RES	SPS
WAT	STP
SEW	
REC	



**STANDARD DRAWING
SEWAGE PUMP STATIONS
TYPICAL PIPING AND INSTRUMENTATION DIAGRAM**

DRAWING STATUS	
Current	
SD-1200-C	
A1	ISSUE B
© Icon Water, 2017	

DEHUMIDIFIER

DHM-01

FLOW: xx m³/h (100% Flow)
 PRESSURE: xx Pa (Nominal)

ACTIVATED CARBON TANK

TNK-01

VELOCITY: xx m/s
 CONTACT TIME: xx sec
 BED DEPTH: xx m
 VOLUME: xx m³
 MASS OF CARBON: xx kg
 PRESSURE DROP: xx Pa
 PRESSURE: xx Pa (Nominal)

ODOUR CONTROL FAN

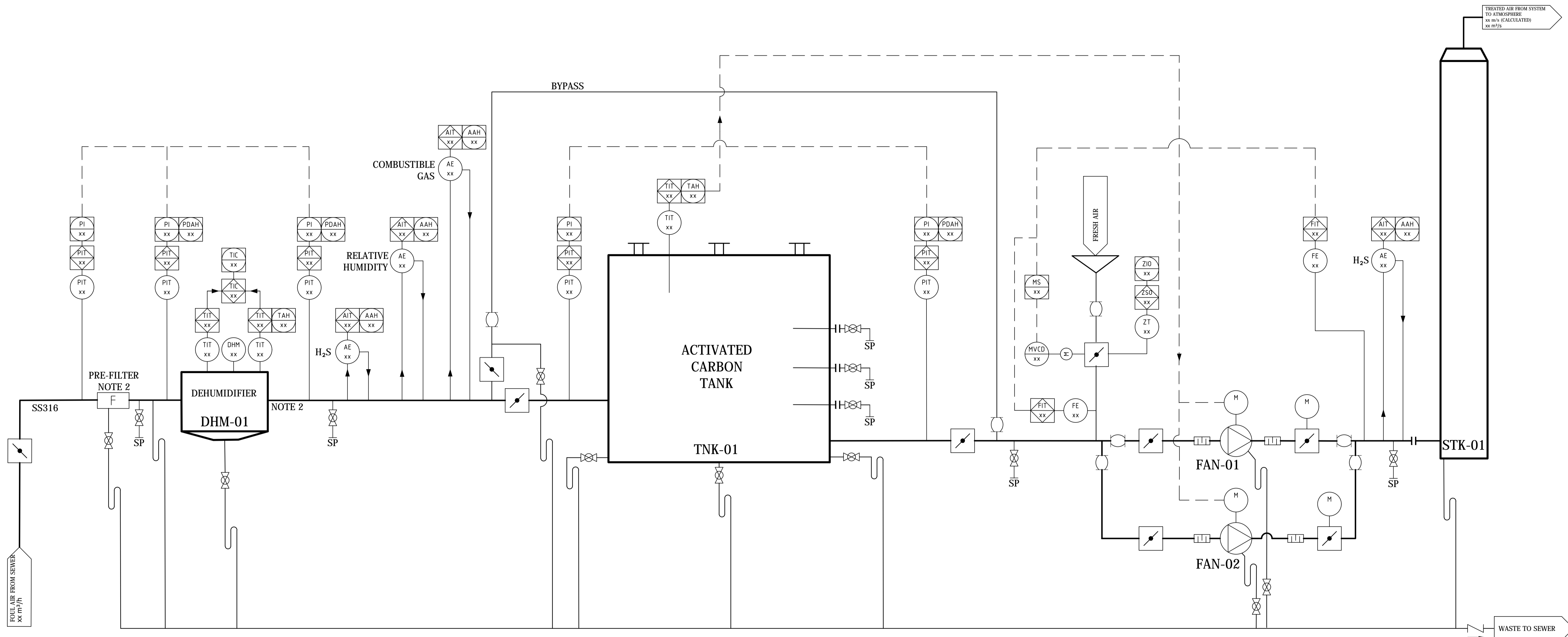
FAN-01 / FAN 2
DUTY / STANDBY

FLOW: xx m³/h (100% Flow)
 PRESSURE: xx kPa

DISCHARGE STACK

STK-01

TREATED FLOW: xx m³/h (100% Flow)
 HEIGHT: xx m
 EXIT VELOCITY: xx m/s
 DIAMETER STACK: xx mm
 DIAMETER EXIT CONE: xx mm



NOTES:

1. XX DENOTES FIELDS THAT ARE TO BE POPULATED WITH SITE / PROJECT SPECIFIC VALUES.
2. PRE-FILTER AND DEHUMIDIFIER BYPASSES NOT SHOWN FOR CLARITY.

A	INITIAL ISSUE	18/07/2018	S. Essery	S. Buck	K. Danenbergsons
B	DRAWING UPDATED	18/06/2019	S. Essery	K. Danenbergsons	C. Patrick
No.	ISSUE	DATE	DRAWN	CHECKED	AUTHORISED

DAM	RES	SPS	X
BWS	WAT	STP	
WTP	SEW	X	
WPS	REC		
ASSET AREA APPLICABILITY			



STANDARD DRAWING
 ODOUR CONTROL UNIT
 TYPICAL PROCESS AND INSTRUMENTATION DIAGRAM

DRAWING STATUS	
Current	
SD-1203-C	
A1	ISSUE B
© Icon Water, 2017	